

# Stoke Fleming Voice

*November 2025*



Nominal value  
£1

**Special Issue: Local Produce**

*Supported by Devon County Council and South Hams District Council*



## STOKE LODGE

HOTEL

Situated in the heart of Stoke Fleming, Stoke Lodge Hotel is a family-run hotel offering cosy coastal stays, deliciously fresh food, indoor and outdoor swimming pools, and a terrace leading from the bar, which boasts stunning sea views.

01803 770523

[hello@stokelodge.co.uk](mailto:hello@stokelodge.co.uk)



Celebrate in style!

Join friends aboard to explore the River Dart whilst enjoying the best local flavours washed down with a glass of bubbles.

Please contact us on

07306 239830

[www.thebanquetboat.co.uk](http://www.thebanquetboat.co.uk)

## POSH POOCH

Canine beautician from the  
London Academy of Grooming

*All Breeds Groomed - Bathed - Clipped  
Hand Stripped & Trimmed  
Now Offering Cat Care  
in Your Own Home*

Local Collection and Delivery Service Available

For Appointments & Enquiries

Mobile: 07970 877431

## e-Xplore Devon

E-BIKE HIRE, SALES & SERVICE

01548 859745

[info@e-xplored Devon.co.uk](mailto:info@e-xplored Devon.co.uk)

[www.e-xplored Devon.co.uk](http://www.e-xplored Devon.co.uk)

Unit 2L, South Hams Business Park TQ7 3QH

## ANDREW WATSON - CARPENTRY

Fitted Kitchens & Bespoke Carpentry

**Complete Design & Full Installation Service**

**From a complete kitchen to a single unit**

**Free initial consultation**

**Tel: 01803 770125 or 07976 574108**

15 Deer Park Road, Stoke Fleming, Dartmouth, TQ6 0QW

## Introduction

Welcome to our first special issue of *Stoke Fleming Voice*, which focuses on the importance of local produce in supporting local farmers and others, improving the quality of our food, and reducing food miles to support action on the climate emergency. We'd like to thank several Parish groups for covering this agenda in their articles, especially Loam Rangers for calculating their "tip trip mile" savings! We also really appreciate Julian Brazil for providing funding for this issue through Devon County Council's locality budget and Simon Rake for funding from South Hams District Council's climate change and diversity fund. Simon provides his guest editorial for the special issue with additional content on this important topic on page 13.

Our other main focus is on Joan Mason, who sadly died recently. It's only been a few months since we took on this magazine from Joan and we very much appreciated her generosity in time, and seed funding, to get us going. Therefore, as well as obituaries for Joan, and for Ian Phillips, we have included a short history of the magazine, which we hope emphasises Joan's huge contribution as editor of this publication, amongst her many other roles. We have also recognised that many groups providing their content for the magazine would want to pay their own tributes to Joan, so include some of their comments on page 6. Unfortunately, we can't do this for everyone who knew Joan, or mark the end of everyone's life in this way, but we hope you understand the desire of our editorial team, and of contributors to the magazine, to pay particular homage here.

Looking ahead as we get closer to Christmas, a reminder that our December magazine will cover both December 2025 and January 2026.

If you would like to contribute an article, Reader's View or Letter to the Editor, please email [stokeflemingvoice@gmail.com](mailto:stokeflemingvoice@gmail.com). Your contribution can be published anonymously, but our team will need to know who you are. Publication is at our editorial discretion.

© Items published in this Magazine are copyright and permission must be sought from the editors before reproducing them in any form.

An article or advertisement in this magazine does not mean that the Magazine Team endorses any of the views expressed, or the goods or services offered.

*(Cover photograph of Stoke Fleming (circa 1910) from Barry Morris' postcard collection.)*

## Reader's Corner

**Autumn:** “*Season of mist and mellow fruitfulness*” wrote Keates.

“*No fruits, no flowers, no leaves, no birds! - November!*” ends Thomas Hood’s much less positive poem.

How do you feel as the nights grow longer and the warmth of summer fades into your memories? Do you celebrate the generosity of God in the bounty of harvest? Do you wonder at how trees convert air carbon dioxide, water and minerals into apples, or how cows turn grass into milk, beef and more cows? Or do you just mourn the end of summer and the onset of poorer weather?

Autumn can start so well as the trees turn to bright oranges and yellows, fruits grow in abundance and maybe an Indian summer gives us a final burst of warmth. Sadly, this never lasts and autumn ends with bare trees, dropping temperatures, gales and storms.

We know that autumn will be followed by winter (with Christmas) and then the new life of spring, and so the cycle of the seasons will continue until the world’s end.

In the midst of this constant change, God never changes. His love is always the same; His character dependable and His ways and purposes constant. The Bible reminds us that Jesus also never changes. “Jesus is the same yesterday, today and forever”. The changelessness of God is a source of hope as we face the environmental crisis we are making. God is never taken by surprise. Whatever mess we get ourselves into - if we turn to Him he will guide us through it.

Jesus answered the question “What can I do?” by quoting two parts of the Old Testament. “Love the LORD your God with all your heart, with all your soul, with all your mind and with all your strength, and love your neighbour as yourself”.

If we truly love God we will appreciate and respect His earth which He loves and which has trusted us to care for. If we truly love all our global neighbours then we will be prepared to make the changes to our lifestyle that will limit the harm climate change is making to their lives.

So try really looking at a little bit of nature. A branch of hawthorn or a discarded feather. Let it speak to you. Then watch the effects of a hurricane or a climate change induced drought and let that speak to you too.

May God bless our communities this Autumn.

**Jeff Hacon**

Church website: <https://www.stokeflemingchurch.org>



## From the Registers

No entries this month.

## St Peter's Church Services for November

- Sun 2nd      11.00am Holy Communion.  
6.30pm Choral Evensong.
- Sun 9th      10.50am Service of Remembrance.  
4.00pm THE 4.
- Tue 11th     10.55am Armistice Day Service at the War Memorial.
- Sun 16th     11.00am Communion by extension.
- Sun 23rd     11.00am Morning Worship, "Christ the King".
- Sun 30th     11.00am. United Benefice Holy Communion at Strete.  
6.30pm United Benefice Advent Carol Service at  
Blackawton.

## Little Stars

We have welcomed new little stars and mums and grandmas to our group on Monday mornings in St Peter's church 9.00-10.30, term time only. Everyone is welcome to our happy little band. The church is full of laughter and fun. Come and join us.

**Heather, Sue and Peter**

## Lest We Forget –



### Remembrance Sunday 9th November

Poppies can be purchased in Stoke Fleming from the Village Shop, Stoke Lodge Hotel and the Green Dragon. There will be no doorstep sales. Wreaths can be ordered from Linda Morris, 01803 770754 or Email [linda219.morris@btinternet.com](mailto:linda219.morris@btinternet.com).

See above for times of Remembrance Services at St Peter's Church.

## Joan Mason (1941 – 2025)



Originally from Sherwood, Nottingham, Joan moved to Stoke Fleming in 1967, when her husband Trevor took up a lecturing post at the Britannia Royal Naval College. She joined the Primary School as a part time teacher, and the village Brownie pack, eventually becoming Brown Owl. With the Guides she also acted as the Quartermaster on their camping trips. She then went on to join the "Hort & Sport", eventually becoming Show Secretary and running the Show for many years.

She served on the Parish Council for many years eventually becoming Chairman and was also Chair of the Coleridge Group of Parish Councils during the period when the sea breached Slapton Line. Joan and Trevor

joined with the late Peg and Bill Fergusson and the late vicar Ron White to restart the Stoke Fleming Magazine. When Peg died in 2001 Joan took over as editor and finally retired from this post in December 2024. (See the article about the history of the Magazine on page 5). She gave a lot of help to the new group who took over the running of the new magazine, *Stoke Fleming Voice*.

After retiring from teaching Joan took on the post of librarian in the Village Hall, also acting as a Trustee on the Village Hall Management Committee, and running the 100 Club (which raised a lot of money towards the Hall's upkeep) until she gave it up because of ill health last December. Together with others, she started a Craft Club for those who wished to meet, chat and do handicrafts and, amongst all these activities, she always found time to decorate two trees at the annual Christmas Tree Festival.

Throughout her years in Stoke Fleming Joan used her love of needlework and dress making skills, designing and making costumes for productions at the Naval College, for Dartmouth Players and plays put on by the Village Drama Group "SODS". Those skills also won her many prizes that she was very proud of, at the Stoke Fleming Hort & Sport show.

Joan certainly believed in helping everyone and supporting everything that was going on in the community.

*Text and photograph by Barry Morris.*

*Editors' Note: Joan was a well-known and much-loved figure in Stoke Fleming and will be sorely missed. Some tributes from village societies and residents appear elsewhere in this magazine.*

## Joan Mason and The Stoke Fleming Magazine

Joan's stated aim: *"To disseminate information for the benefit of the whole community of Stoke Fleming parish, to entertain and to inform."*

Stoke Fleming Magazine was originally started in 1871 as a "church" magazine, but at some point it lapsed!

The Rev. Ron White restarted a purely secular magazine in January 1990, with Bill and Peg Fergusson working on distribution and finances. The Parochial Church Council put in enough financial support to get it off the ground, then Bill and Peg ran a Horse Race Evening to add to funds until the magazine had enough to function as a totally separate entity through advertising, grants from local organisations and parishioners' annual voluntary contributions.

Peg Fergusson took over as Editor in 1995 and, after her death in 2001, Joan and Trevor Mason joined Bill as Editor and Production Manager respectively.

What had started as a set of type-written sheets of paper, duplicated in the vestry of Blackawton Church and painstakingly collated and hand-stapled together to form a magazine of eight pages, gradually become a larger publication, including Barry Morris's photographs, put together on the computer, emailed to the printers at Salisbury and returned ready for distribution. As more houses were built, volunteers came on board to deliver increased numbers of copies.

Twice in its recent history the magazine was entered for the National Parish Magazine Awards and each time, came within the top 10% – a fact of which Joan was justly proud.

Joan and Trevor were close to completing their quarter century of magazine production and in all that time had never missed a single issue, even during the Covid pandemic. However, due to ill health, Joan had to pass this on to the current team at the end of last year.

Whilst our new team produce what is now called *Stoke Fleming Voice*, we aim to carry on the legacy that Joan has left us and the magazine still functions largely as it did in the 1990s, being run independently by volunteers. The main difference, perhaps, is that our core team is now six people, busily trying to undertake what Joan and Trevor largely managed to achieve alone!

Before handing the magazine over to us, Joan shared these words from Ron White's first editorial with us: *"The idea of the magazine is not to make any money, but to link together all of us in the parish with our varied activities and interests"*. We continue to support this approach.

*Based on research conducted by Joan herself.*

## Some More Tributes to Joan Mason

“For me Joan was my greatest helper, supporter and advisor during my time as Head. I shall be forever grateful”, *Pamela Eales, former Headmistress, Stoke Fleming Primary School*.

The Probus Club of Stoke Fleming and District notes with sadness the passing of our good friend Joan Mason. For many years in her role as editor of the Parish Magazine, Joan tolerated our late copy, our spelling mistakes and other misdemeanours. Joan was a sweet lady and stalwart of the community who will be sadly missed by the Club members and many others in the village.

The Parish Council sends its sincere condolences and there will be one minute's silence at our next meeting in November.

“I remember Joan as one of my teachers at Stoke Fleming Primary School, teaching English, sewing and craft. She was exacting, not standing any nonsense and very kind. More recently, with The Stoke Fleming Magazine, she became a loyal supporter of our charity”. *Judy Oliphant, Prickles in a Pickle*.

Joan helped to set up our Craft Club about 20 years ago. She was always welcoming, kind and very organised. She has been a wonderful friend to us all and will be sorely missed.

It would be remiss of us all at Stoke Fleming Loam Rangers not to recognise the support Joan gave us – always encouraging with the operation and principles we follow, as well as some crucial editorial input when required. A true champion of the community.

All the Friends of Rowcroft in Dartmouth were so sad to hear of Joan's death. For all the years she and Trevor produced the Stoke Fleming Magazine they made it so easy for us to advertise the Rowcroft events in the village and supported us in so many ways. She was an inspiration in which we hope to follow in all we do.

We were saddened to hear of Joan's recent death; for many years she ran the 100 Club with great dedication and care before handing it over. Her commitment, energy, and warmth earned her the respect and affection of so many in the village. Joan's hard work over the years has left a lasting mark on our community, and she will be fondly remembered by all who knew her.

Many years ago, the predecessor to Start Bay Performers was formed. It was called Stoke Fleming Operatic and Dramatic Society (SODS). It was a large society which gave many ambitious performances both musical and drama. For these, costumes were needed and Joan Mason was the talented seamstress who produced them. She didn't need a pattern, just an idea of what was wanted, and she did the rest. We still have those costumes. I think the best is probably for Queen Elizabeth I, made from

gold velvet curtains. Thank you, Joan. We were a fortunate society to have had your support and talent. *Mary Rimell.*

There are few people in the village who have devoted so much of their time to village affairs. Joan was an excellent and very thorough teacher and she also gave her time to many organisations which, under her, ran like clockwork. Her encouragement to Nick Teage to write a history of Stoke Fleming has meant we can all enjoy the illustrated history of the village and surrounding area. *Mary Newman.*

## **Charities Join Forces to Bridge the Digital Divide in Devon**

A partnership between two Devon charities, Devon Communities Together and Wellmoor, has launched a new initiative to offer free support to people in Devon's rural and coastal communities with everyday online tasks.

Digital Skills Devon, funded by the UK government through the UK Shared Prosperity Fund, provides personal, tailored support for individuals who are lacking skills and confidence in performing particular online tasks. What people receive help with is up to them – it could be doing an online food shop, using the NHS app to access healthcare, checking energy use or joining an online chat to connect with friends and family. People will be asked what matters to them when they apply and their support will be personalised accordingly, with up to five hours in-person support available.

The support is focused on people who need it the most, in particular the following areas:

- Older adults
- Unpaid carers
- People with long-term physical and mental health conditions
- Disabled individuals (including neurodivergent)
- Individuals in isolated rural and coastal areas
- Long-term unemployed

The project offers people the chance to have individual 1:1 support, receive advice to support a member of their family or friends, or allow organisations the chance to access bespoke advice tailored to them.

For more information or how to access support, please contact Devon Communities Together on 01392 248919 or email [info@devoncommunities.org.uk](mailto:info@devoncommunities.org.uk).



**Funded by  
UK Government**



**Devon and Torbay**  
Combined County Authority



This project is funded by the UK government through the UK Shared Prosperity Fund.

## Gardentime

### Top 10 gardening tips for November



1. Sow sweet peas now for earlier flowers next year. Soak the seeds in water overnight before sowing, then place the pots in a cold frame or greenhouse to overwinter.
2. November's the ideal month for planting tulips, and it's not too late to plant other spring bulbs like daffodils and crocuses for a brilliant display of colour in spring.
3. Plant up pots with violas, cyclamens and other winter-flowering plants to cheer up your patio through the cold winter months.
4. Plant garlic cloves now so that they get the winter chilling they need to grow well. You can also plant overwintering onion sets like "Radar" or "Electric" in well-drained soil for an early crop. (If your soil is heavy clay, grow the sets in modules in a greenhouse for planting out in spring.)
5. Plant new soft fruit bushes such as blackberries, blueberries, raspberries and currants.
6. November's a good time to prune apple and pear trees and soft fruit like blackcurrants, redcurrants, whitecurrants, and gooseberries. Prune autumn-fruiting raspberries, cutting all the canes to ground level and prune summer fruiting raspberries by cutting all old canes down to ground level, leaving only this year's growth remaining.
7. Mow your lawn on a high setting and rake up fallen leaves. If you haven't aerated and scarified the lawn yet, there's still time to do it this month.
8. Once you've harvested all your veg, spread well-rotted farmyard manure on the beds so that it has time to work into the soil over winter.
9. Protect patio pots against icy temperatures and winter rain by wrapping them in hessian or bubble wrap and raising them up on pot feet.
10. Put up a bird feeder and fill it regularly with high-energy foods like sunflower seeds or suet balls. Keep birdbaths topped up and free of ice so that birds can wash, helping them stay warm through icy weather.



## Ian Phillips (1953 – 2025)



Ian was born in Plymouth, then after leaving school he went to study “Drama in Education” at Goldsmiths College. He got a teaching job in Plymouth and also started to make pieces for Devon Local Radio, where he eventually became the early morning presenter. When it changed to Radio Devon, he joined the team as a producer/presenter. One of his assignments was a piece in Stoke Fleming for BBC Voices. He did a short attachment in London as an announcer for BBC1. After a serious illness Ian and I came back to Strete and he left radio and

began making short videos for Peninsular Medical School and similar social groups. As a member of Bash, our local history group, he also made several films. “Dartmouth after 1945” is being shown at the Flavel on 7th November at 5.30pm. There will also be a celebration of his life there at 2.30pm.

Ian loved acting and singing and played lead roles in the Plymouth Gilbert and Sullivan Society and other groups. Returning to Strete he became a member of Stoke Fleming Operatic and Dramatic Society (SODS), and directed various plays and reviews for them, some with John Goddard. He was also a great supporter of the Flavel where he produced shows and became a Trustee.

We returned to live in Stoke Fleming seven years ago. Thank you to all who have sent their condolences and kind thoughts.

**Val Phillips**

### VANITY TAILS

DOG GROOMING & TEETH CLEANING



**NICKI**

To Book Phone:  
07548500792

25% deposit required to secure all Bookings

Lyn Drury

### PAINTER

*Painting & Decorating  
Interior & Exterior*

*Wallpapering, Floor & Wall Tiling  
Fencing, Paving, Decking etc.*

Competitive rates - Free estimate

Phone: 07870 269 609 or 01803 770 688

email:- [drurylyn1@gmail.com](mailto:drurylyn1@gmail.com)

## **Children's Hospice South West – events for your diary.**

The Dartmouth & District Friends group continue to fundraise for this local charity which is dear to our hearts because of the outstanding care the three hospices in the southwest provide for children with life limiting conditions and their families.

On the evening of Wednesday 3rd December, we are hosting a fashion show at The Flavel Arts Centre, Dartmouth which is a joint fundraising event with The Flavel. Details to follow but expect fizz, canapes, fashion ideas for Christmas and the spring, and an insight into the fashion industry.

Our now traditional Christmas Fair will be held on Saturday 6th December in the Old Market Dartmouth, with homemade cakes, stalls and entertainment from Dartmouth Rock Choir. Christmas will be here before we know it!

**Ann Green**

Communications Volunteer

## **Who Cares Club**

Are you right now caring for a loved one or friend or have done in the past?

I, John Mitchell, together with all our members have been through difficult, sad and lonely times. We would make you very welcome to join us for a monthly lunch at the Sportsmans Arms (at a very special price) and a coffee morning. We will provide you with an aura of understanding and any support you may seek.

You would be joining a group who have become friends, so please join us by calling me on 01803 835030.

## **The Stoke Fleming Village Advent Calendar** will be back this Christmas!

Each day, from 1st to 24th December, a new window will be revealed, just like opening a door on a traditional advent calendar. We are looking for houses in the village who would like to take part, all you need is a window and a little bit of festive imagination.

If you're interested in participating, keep an eye out for Facebook posts, email **Emily Bridge** at [stokeflemingadventwindows@gmail.com](mailto:stokeflemingadventwindows@gmail.com) or message **Emily Handley** on 07875 403911.

# THE GREEN DRAGON

Traditional home cooked lunches & evening meals

Local real ales, quality wines, gin shelf, log  
fire and plenty of outdoor space

Your family & dog friendly  
village pub

Phone: 770238



## The Green Dragon

Hello November!! Here's to our cosy fire season and Sunday roasts serving every week from 12-4pm. We are continuing to serve our delicious "Putty's Breakfasts" every Friday and Saturday 10am-12pm.

Our new opening hours for the winter season are:

Monday and Tuesday	5-10pm
Wednesday and Thursday	12-2.30pm and 5-10pm
Friday and Saturday	10am-11pm
Sunday	12-9pm

## November Events

Saturday 1st November - Isabelle Nutton Music Live from 8pm

Tuesday 11th November - Greedy Table Tex Mex Tuesday night

Saturday 15th November - Greedy Table Specials Board Take Over

Sunday 16th November - Greedy Table Amazing Sunday Roast

Looking forward to December and the Christmas season we have our Christmas Market on Saturday 13th December, more live music and our famous New Year's Eve party - watch this space!!!

**Georgie and Alan**

# **THE GREEDY TABLE**

**Local Private Chef & Small Party Caterer**

Offering food deliveries for dinner parties and special occasions, or in house cooking.

Tailor made menus to suit different budgets and tastes.

Contact: [thegreedytable@gmail.com](mailto:thegreedytable@gmail.com)

# CRAB SHELL



"Probably the best  
seafood sandwiches  
you'll ever taste"

*Open daily  
Easter till November  
mid morning-afternoon  
Seafood sold loose*

1 Raleigh Street, Dartmouth Tel: 01803 839036



MAKERS OF FINE ICE CREAM AND FUDGE

**HOMEMADE ICE CREAM - HOMEMADE FUDGE -  
CREAM TEAS - CLOTTED CREAM -  
LUXURY DEVON HAMPERS**

The Good Intent, 30 Lower Street, Dartmouth, TQ6 9AN t:01803 832157  
[www.dartmouthicecream.com](http://www.dartmouthicecream.com)



## Dartmouth Caring

Supporting Our Community

We are a local charity, reliant on self-funding. We support the vulnerable and those in need in Dartmouth and surrounding villages.

We are here to assist when someone you know needs support.

Some of our services are listed alongside.

- General Advice, Support & Advocacy
- Outpatient Transport
- Various clubs:

Lunch Club—Memory Café—Monday Makers—Souper  
Thursday—Baby Weigh & Play—Table Top Gaming Group—  
Bereavement Group

- Housing & Benefit advice
- Palliative and Oncology Nursing support
- Visually Impaired Reading Club
- Dementia Carers Support
- Social Prescribing
- Befriending
- Counselling Support

01803 835384

[enquiries@dartmouthcaring.co.uk](mailto:enquiries@dartmouthcaring.co.uk)



## TREE SURGEON

All aspects of tree & hedge work  
Tree Surveys & Inspections  
Mobile log splitting service

Professional, qualified, experienced & insured

**Nathan Brown 0751 3030476**

RFS Cert Arb, Arb Assoc. Technician Member

Property Services,  
Gardening & Design

# DECORLEAF



**Contact Mark**

**07561 881132**

[seaparr01@yahoo.co.uk](mailto:seaparr01@yahoo.co.uk)



# Special Features – Local Produce

## Guest Editorial

*By Simon Rake, Blackawton & Stoke Fleming Ward & Deputy Leader of South Hams District Council*



Think global; eat local.

With a certain irony, bookshop shelves groan under the weight of diet books: keto, paleo, Mediterranean, 5-2, DASH, the list goes on and is regularly refreshed (or at least added to).

I find it surprising that so many pages can be filled in this way, especially since the best diet advice I have ever heard has been around for a while now and contains just seven words, “Eat food. Not too much. Mostly plants.” (*Michael Pollan, The Omnivore’s Dilemma, 2006*)

Focusing on eating locally produced food can be a big help in keeping to this 7-word guidance. “Eat food” means things that our grandmothers would have recognised as food, avoiding the ultra-processed and artificial, in favour of food grown in, or stood on the soil. Real food. We are blessed here in the South Hams to have an abundance of small local farmers, growers and producers of exactly this.

“Not too much” reminds us not only to control our consumption but also of the importance of quality over quantity. By staying local we have access to delicious fresh food that has been spared the loss of nutrients that comes with transport and storage. As well as being powerfully beautiful, our local landscape does not lend itself to the industrial excesses of the food production process.

“Mostly plants” dovetails with the other two. Fruit, vegetables, grains and pulses are all real foods, often unprocessed when they reach us. Treating them as the core of our diet allows those of us who want to eat meat and dairy to do so with an emphasis on quality and provenance, where again we are well supplied by local producers. In my long-ago youth there was a sort of binary approach to eating meat; fortunately, things are more nuanced now. For my part, I am not vegetarian, but many of my meals are.

So much for “eat local”, what about “think global”? Well, the relatively small farms of the South Hams are richer in biodiversity and less prone to the fuel and fertiliser-intensive agricultural approaches found elsewhere in this country and abroad. Not flying or shipping in our food avoids the associated production of CO<sub>2</sub>, as does the reduction of “food miles” if what we eat hasn’t been trucked all over the country for processing and packaging. Better, fresher food (not too much, remember) with less impact on our fragile planet.

Bon appetit.

**Simon**

## Parish Life - Chris and Carmen Wallis



We normally call this feature Village Life, but this month, we're at Lower Ash Farm, with owners Chris and Carmen Wallis.

This is a dairy farm which includes the reservoir feeding Stoke Fleming and runs along a substantial length of the parish boundary (a previous vicar used to lead small walking groups through the farm every few years to "beat the bounds"). The farmhouse is situated west of Ash by Clotted Cream Cottage on the back road down to Bowden.

Chris's great grandad worked on what was then a traditional mixed farm from 1901 and later on, purchased the farm. Chris's dad, Leslie, then brought in a tractor to replace their farm horses, and his onions frequently won prizes at Hort and Sport. However, Chris had a passion for dairy farming, so he slowly bred up the cattle and selectively brought in more cows to make up the herd of about 400 Holstein Friesians today. The cattle are all named – their prefix name is Ladehay – and Chris and Carmen recognise them from their brands, but also as individual characters. The farm also grows crops like grass, maize, wheat and turnips to provide silage to feed the herd.

Chris's day starts at 4.15am, milking the cows and feeding the calves before his own breakfast. There will then be lots of other jobs to do before milking starts again at 4pm. On a good day, they'll finish work a bit before 7pm.

Like many farmers, the Wallises have diversified, firstly by buying an unusually large shepherd's hut which they've situated in a six-acre area of woodland, but within gazing distance of their curious cows. This is rented out (as Ash Woods Retreat) and visitors obviously enjoy the peace and quiet, with just a faint trickling of the stream running down towards Blackpool Sands, and an occasional moo in the background. Chris and Carmen enjoy meeting their guests, and even more so, seeing them recharged by the time they leave.



The farm also has LEAF (Linking Environment and Farming) accreditation and the Wallises plan to start bringing children and others in to learn about the farm. Chris and Carmen have three grown up children of their own - Jim, Rosie and Lorel – who all originally left the farm. However, Jim came back and now does most of the tractor work, although his son, Max, now 13 and the eldest of the sixth generation on the farm, is keen to have a turn too. Rosie and her family have



also now returned to the parish. Lorel still lives in Paignton but returns on weekends to stay. Chris and Carmen are pleased the farm can remain in the family, subject to the new inheritance tax challenges, of course.

Very recently, whilst still supplying 1.5 million litres of milk per year to Arla, the Wallises have started selling their on-farm, batch pasteurised, unhomogenised, whole milk locally. They are pleased to offer one or two litre bottles that can be delivered or picked up at the farm, typically on Monday and Thursday/Friday.

Jim's partner, Saskia, is the best contact for milk orders, either by messaging Lower Ash Dairy on Facebook, or by calling 07761 996092.

## Loam Rangers



In line with this month's sponsorship from Devon County Council, and the focus on reducing food miles and climate change, it is worth recognising the significant impact SFLR has, not just with the excellent community spirit and genuine recycling principle of: "what we take from the ground – we put back in", but with a real environmental benefit.

As an example: For the year ending March 25 we had 1,305 visits to the site by members – the alternative being a trip to Totnes or Torr Quarry – a round trip of around 28 miles. A saving of 36,540 miles! In environmental terms close to 10 metric tons of CO<sub>2</sub>! We can all breathe a bit easier!

A quick update on the repairs to our riddler – things are going well, if a bit more involved, with a significant overhaul being carried out. However, we do hope to be back in action by the time you read this magazine.



As in previous years we are looking at the once-a-month Sunday opening through winter – December to February. Currently the planned dates will be 14th December, 11th January and 8th February.

These dates will be confirmed and circulated to all members and volunteers.

**Steve Shakespeare** – [sgshakespeare@btinternet.com](mailto:sgshakespeare@btinternet.com) 07970 137311

**Paul Noonan** – [pnoonan14@gmail.com](mailto:pnoonan14@gmail.com)

## News from the Community Kitchen

We are cooking up a storm for our October lunch as I write this! Oriental salmon will be on the menu which we hope will tickle the taste buds for everyone. We are often asked for fish as many people dislike cooking it at home. It will be served with a sauce and noodles for a change, along with the usual delicious puddings.



Next month, our lunch will be on **Friday 14th November** in the Village Hall at 12.30pm and the tickets will be on sale on Monday 3rd November from **8.30am**. Laura has asked for a later time so she can serve her usual customers first.

We have an offer for next month – a BOG OF – Buy one ticket and bring a friend or neighbour from the village who has not been before, and you will be refunded half the ticket at the lunch. Lunch for £6. What a bargain!

We started the lunches before Covid, to bring people together, to share a meal, to meet neighbours and to have a healthy and wholesome hot lunch. We have served over 50 lunches now. Your ticket costs £12 (£10 in the shop and £2 on the day) and we ask for a donation for tea or coffee. Bring your own tipples and let us know in advance of any dietary requirements. A vegetarian option is always available, but we do appreciate advance notice for numbers.

Whilst I write this, my thoughts turn to these ideas for healthy meals:

- Eat 30 different plants in a week
- Eat a colourful diet

Eat a diverse diet  
Buy local  
Consider air miles  
Eat in moderation

Where do you start? 30 plants a week is easy peasy. We probably serve 30 plants in one Community Kitchen lunch – and it is diverse and colourful. Buy local is more difficult when confronted by the supermarket v. local shops but the local shops often have local fruit and vegetables and often as cheap. Consider air miles and try to buy seasonal. Avoid the beans grown in Africa or Peru, the asparagus from Morocco and buy local when in season.

Eat in moderation, meaning less red meat, more beans and lentils and use spices and herbs to season and some oily fish each week. Which brings me around in a nice circle to our meal of Oriental Salmon today. It ticks all the boxes. Hurrah!

**Mary Newman**

## **Stokeley Farm Shop**

Stokeley Farm Shop at Stokeley Barton Farm is committed to supporting local producers and minimizing food miles. We believe we have the largest selection of local produce on our shelves within the South Hams. Local fruit & veg suppliers (some still grown on site), local meat suppliers in Kingsbridge, East Allington and surrounding areas, South Devon Chili Farm, Black Ash Elderflower, Sticky Fingers Cakes from Chillington, Artigrano Artisan Bread (made here on site in a Shepherd's hut), Salcombe based Salcombe Gin, Devon Rum and Salcombe Dairy. A little further afield producers include Barbers Chocolate from Kingsteignton, carbon neutral Langage Farm in Plympton and Forthglade dog food in Oakhampton.



Our site is also home to a variety of local artisan shops, including Relish – lifestyle store, The Tin Can and The Shed (which both house a collective of local makers), Eden Hair Studio, Becky Brine Jewellery, and our garden centre Green Garden Spaces. In our “Pop Up Shed” there is a rotation of local producers showcasing their goods. Next door is our sister business, South Hams Drinks, where you can enjoy our own brewed beer, cider, and soft drinks in The Taphouse.

At Stokeley Farm Shop, we also hold lots of events throughout the year, whether it be regular live music, children's entertainment, charity quiz nights, meat raffles and even

Carols round the Tree at Christmas! There is always something happening at Stokeley. Check out our website and social media for regular event updates. [www.stokeleyfarmshop.co.uk](http://www.stokeleyfarmshop.co.uk).

## **Nicola de Pulford: Farms behind the hedge**

Nicola de Pulford is a Blackawton-based farmer and author who has written on the need for people to better understand farming and where our food comes from in her book, *Behind the Hedge*.

We found out when we caught up with her that she's recently sold most of her land and animals although she still grows vegetables for the local shop and keeps a few rare breed chickens. However, we still wanted to share these insights with you:

"In my childhood, my father's sister Betty, a teacher and vegetable grower, was a great influence. During our long foraging walks, she always stressed never to pick everything, leave enough for the wildlife! I have always tried to farm in a nature friendly way and cherish the wildflowers.

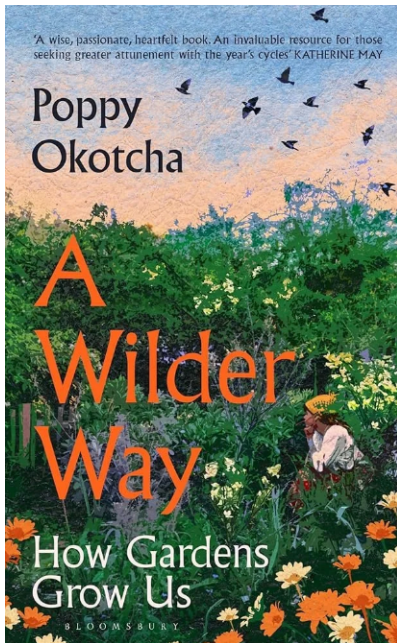
"Raising a young family and farming is hard work and most of your time is spent outdoors, wonderful for children. Sitting on the doorstep with your children shucking peas is a joy every child should experience. Especially as you cannot help eating them raw; any excess peas are frozen for the winter."

## **Book Review: *A Wilder Way* by Poppy Okotcha**

Poppy Okotcha, a former model who is now an author on gardening, was at the Dartmouth Book Festival last month. Her book covers an eclectic mix of Nigerian cosmology, South African injustice, English pagan festivals, tips on foraging, her former house boat in London and her new garden in Totnes, but it focuses mainly on the "magical whimsy" of growing food. This includes recipes, which, given the expertise of the chefs at the Community Kitchen and entrants to the Hort and Sport show, may not be needed by many residents. However, there are also lots of suggestions on composting to appeal to the parish's Loam Rangers.

Poppy Okotcha's main message is about the benefits of vegetable and herb gardening for health and wellbeing, nourishing body and mind, including through the touch and smell of soil. In addition, echoing Nicola de Pulford, she suggests growing food helps us push back against "plant blindness". Understanding where our food comes from, when it is sown and harvested across the seasons, and participating in its creation helps develop a closer relationship with life on Earth.





By growing food, we can help slow climate change and also improve and restore our environment and even ourselves. Poppy Okotcha suggests that whilst we may think that we tend and grow gardens, these really grow and change far more in us.

The main opportunity, perhaps, is to see ourselves as part of the Earth's living systems, letting our gardens teach us about reciprocity and circularity, care, kindness and connection. For example, the decay of plants in Autumn, and the collection and sowing of seeds, helps us understand the importance of sleep and nourishing rest - or restful activity, such as weeding or turning the compost. It can also help us accept that death happens to all of us and is part of life.

In addition, the complex relationships of support and co-creation between plants, insects, bacteria and fungi helps us see that real and resilient change lies in the complex relationships between friends, family, neighbours and others. Poppy Okotcha herself co-facilitates a collective (a bit like the self-managing team which brings you the *Voice*) which runs a community garden in Dartington and she explains that growing food lends itself beautifully to community organising – sharing food and experiencing the joy, abundance and impact of working together.

This approach runs against the more prevalent brittle, centralised power structures and industrialised processes run by large, faceless corporations which often creates unanticipated, negative change. Poppy suggests, as an example, that people buying hydroponically cultivated, watery tomatoes grown in Spain have negatively impacted reindeer and the life of the Sami people in the Arctic, reminding me of the short-sighted extraction of shingle from Hallsands.

I hope you can see that it's an interesting book. I've not thought about growing food like this before, but that probably just means I've not done enough of it, and the book has certainly inspired me to do more and see where that leads me.

## **Interested in a Community Allotment?**

We wonder if there would be value in a community allotment project similar to Blackawton's Allotment Association, where members assist with running the association and maintenance of the site. Or perhaps this could be even more community focused, so we grow produce together as a group, more like Poppy Okotcha's example? As well as the benefits she describes (connection and education as well as free, quality food), a community garden like this could provide some level of sustainability for the whole village for when (or hopefully just if) Sainsbury's and / or Lidl get hacked!

We would need to find a site, but we note that Devon County Council has set-up a new “New Allotment Site Fund”, providing grants for local associations to purchase land for “allotment sites that will be managed by the community and have a strong focus on environmental stewardship”.

Is this something we should investigate for Stoke Fleming? If any individuals would like to think this through with us, and talk with the Parish Council, or if any of our farmers would like to discuss a small field somewhere, please get in touch.

**Marie Circuit and Jon Ingham** [jgingham@hotmail.com](mailto:jgingham@hotmail.com).

## About Food and Climate Change

Over the course of a year the food we eat in Devon has travelled over 230 million miles generating around 240,000 tonnes of CO<sub>2</sub>. Devon has some of the best food and drink in the country, which is grown and made by people who are passionate about providing quality food. Buying Devon produce supports Devon’s economy, reduces your “food miles” and means you know exactly where your food has come from. It’s fresher, it’s tastier and it’s good for Devon.

**Devon Climate Emergency** <https://devonclimateemergency.org.uk>

## Introducing Stone Tree Dairy

Higher Swannaton Farm, on the border between Dartmouth and Stoke Fleming, has produced food for the local population for centuries, most recently dairy and latterly beef. Over the past few years, it has become home to a growing herd of dairy goats, who graze the pastures looking over the Daymark across to Start Point.



Goats are not new in the area in fact – the Domesday Book records herds of goats from Townstal along the coast to Strete.

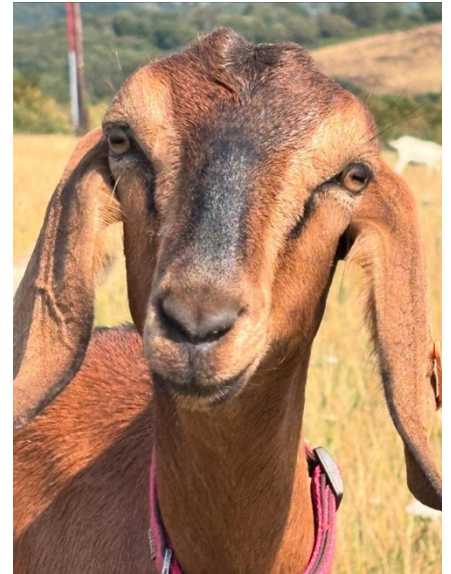
Stone Tree Dairy started life in 2023, and now comprises a happy herd of around 200, and a growing (human) team. We started milking in May 2024 and launched our cheeses last October at the Dartmouth Food Festival. Since then, we have been overwhelmed by the support and encouragement we have received. Our cheeses have been nationally recognised with a number of awards, including most recently Britain’s Best New Cheese for our Redlap cheese.



We have four cheeses: our fresh curd, much-loved with beetroot, pumpkin or tomatoes (to name a few); Salty – a traditional goats feta; Pebble – a washed rind, semi-soft cheese, and Redlap, our semi-hard, Alpine-style cheese. Residents of Stoke Fleming are probably the only people in the country to recognise the Redlap name – it has a reddish rind, but we also wanted a name that represented our local area.

You can buy our cheese from Deli at Dartmouth, Country Cheeses, Ashburton Deli, Ben's Farm Shop, Darts Farm and others (including online at [www.thecheesesshed.com](http://www.thecheesesshed.com)).

Full stockist list at [www.stonetreedairy.com](http://www.stonetreedairy.com). You can also enjoy it at Blackpool Sands, The Bull Inn, Totnes and other restaurants locally.



**Helen Boyd**

## **Local places to shop**

### **Stoke Fleming**

You'll know, we're sure, that you can buy fresh fruit and vegetables at the Village Shop. There are also Rich Chicks eggs from Colleen Farm in Blackawton, bread from Halletts in Paignton and biscuits and pasties from Blakes Bakery in Cornwall. In the fridge, there's Cornish milk and Orchardlea meats and delicatessen products, which are sourced locally from Exeter.

### **Dartmouth**

There is plenty of quality produce available in Dartmouth. Dartmouth Butchers buy most of their meat, including free range pigs, from Ashburton abattoir and lambs from Michael Tozer at Tideford Park Farm behind the Sportsmans Arms.

Dartmouth ice cream and fudge is made at the Good Intent, using milk from Andrew Dayment's dairy farm.

On the drinks front, don't forget Salcombe Distilling and Rock Distillery for gin and liqueurs which could be good Christmas presents.

Did you know that Jilly's Farm Shop is open? Also in the Market, of course, you'll find Stoke Fleming's Mark Lobb (Wild Foods Devon) and his fresh fish, mainly unloaded and bought at Brixham Fish Market.

There are various craft stalls, including Karen Wilson's throws and cushions, hand-made in her house in Stoke Fleming.

Market days are Tuesdays and Fridays, 9am-3pm and special markets take place on Saturdays from 9am-1pm:

- Tabletop market - first Saturday in the month
- Farmers market - second Saturday
- Emporium market - third Saturday
- Artisan market - fourth Saturday.

### **Kingsbridge**

As well as the butcher, baker and a couple of grocers, there's the Devon Cove Tasting Room for spirits from Hope Cove.

Kingsbridge's markets in the Town Square are:

- General market – every Tuesday and Thursday
- Farmers market – every first, third and fifth Saturday

There's also a monthly craft market in the Market Hall, and a smaller one in the Anchor Centre but these close out of season (other than the seasonal markets around Christmas).

On the way to Kingsbridge, you can of course call in at Stokeley Farm Shop or South Devon Chilli Farm.

### **Totnes**

Totnes markets in the Market Square are:

- Local produce market – every Friday and Saturday, 9am-3pm
- Food and craft market – first and third Sunday, 10am-3pm

There's also an artisan market in the Civic Hall – the last one before Spring is on 11th November and the final Makers Market of the year is at Dartington on 2nd November.

Many residents will already be customers of Riverford for their veg boxes, but there's a veg share scheme at School Farm CSA at Dartington, with collections at the farm or in Totnes.

Readers are reminded to check details of shops and markets for themselves before they set off.

## **Directory of Local Producers**

The following directory is a range of local producers and suppliers to cover as many areas of produce as we could think of. All are suggestions or recommendations from people who shop locally. It is by no means definitive, and we apologise to any that we have missed. The variety and quantity of local producers within the South Hams and the immediate area is very impressive!

### **Bread**

- **Hylston Bakery, Buckfastleigh.** Organic bread and a bakery school too. Sold at the Deli at Dartmouth on Duke Street. Tel: 01803 833200.

- **JP Bakery Market Place, Dartmouth.** Julien, a Stoke Fleming resident, who has turned Saveurs into a small, community bakery. Fabulous almond croissants! Tel: 07786 878164.
- **Hallets Bakery, Paignton.** Over 30 years of baking. No need to go to Paignton as a selection of their products are sold by Laura in **Stoke Fleming Village Shop**.

### Charcuterie

- **Rare and Pasture, Ugborough.** Handmade charcuterie from high welfare Fowlescombe Farm and neighbouring organic farms in the southwest. Tel: 01752 428660. Email [hello@rareandpasture.com](mailto:hello@rareandpasture.com).

### Cheese

- **Stone Tree Dairy, Dartmouth.** Award winning goats cheese produced on the farm on Swannaton Road. Sold in Smith Street delicatessen and served in select local restaurants (see page 20)
- **Ticklemore Cheese Dairy, Ashprington.** Three artisan blue cheeses from local, well managed farms. Email [info@ticklemorecheese.co.uk](mailto:info@ticklemorecheese.co.uk). Website [www.ticklemorecheese.co.uk](http://www.ticklemorecheese.co.uk).
- **Country Cheeses, Ticklemore Street, Totnes.** Cheeses made on the edge of Dartmoor.
- **Cider. Hunts Devon Cider, Stoke Gabriel.** Family business started in 1805! Tel: 01803 782422.

### Eggs

- **Rich Chicks eggs from Colleen Farm, Blackawton.** Sold at **Stoke Fleming Village Shop**.
- **David Harris.** Eggs when the small brood of free-range hens feel like laying from the hut on **Venn Lane, Stoke Fleming**. An honesty box so cash only.

### Firewood and Charcoal.

- **Charcoal. Spindle Wood Farm, Halwell.** Charcoal made on the farm. See [www.spindlewoodfarm.co.uk](http://www.spindlewoodfarm.co.uk) to find out more about their charcoal, grass fed goats and pasture-raised poultry. Email [spindlewf@gmail.com](mailto:spindlewf@gmail.com).
- **Firewood. Prickles in a Pickle.** Kindling, soft and hard wood logs. All proceeds go to support the hedgehogs. Contact Alan 07970 983608.
- **Kindling and small bags of Logs. Stoke Fleming Village Shop**
- **South Devon Logs** for firewood on Raleigh Estates, Dittisham. Sustainably managed forestry. Text Nik on 07979 594854 for more information.
- **Mount Quarry Supplies, East Allington.** For large deliveries of logs. Tel: 07734 694967.

## Fish

- **Mark Lobb**, fishmonger in the Market Square, Dartmouth. Locally caught fish and Mark's own smoked salmon.
- **Britannia on the Beach**. Beesands. Locally sourced fish and seafood. Tel: 01548 581168.

## Flowers

- **Blackawton Blooms, Blackawton**. Flowers grown in Blackawton without artificial chemicals, fungicides, or fertilisers that could damage the local ecosystem and wildlife. Tel: 01803 712407. [www.blackawtonblooms.co.uk](http://www.blackawtonblooms.co.uk).
- **Otok**. Florist in **Market Square, Dartmouth**. Alexandra prioritises sourcing from southwest growers and using recyclable and compostable wrappings. Tel: 07886 399655.

## Foraging

- **Wild and Curious Foraging**, based near **Totnes**. Wild food and foraging walks and foraging courses in South Devon. [www.wildandcurious.org.uk](http://www.wildandcurious.org.uk).

## Honey

- **Heather Harris of Venn Lane, Stoke Fleming**. Heather with her bees produce award winning honey. Unfortunately, due to the very dry summer, the bees did not produce sufficient honey this year to offer any for sale.
- **Dartmouth Bees**. Waterpool Apiary. Honey and a range of honey and beeswax products from candles to soaps, lotions and lip balms and hampers. Or adopt an aviary!  
[Dartmouthbees.com](http://Dartmouthbees.com) and [info@dartmouthbees.com](mailto:info@dartmouthbees.com).



## Meat

- **Dartmouth Butchers**, Dartmouth Tel: 01803 832631 and **Stokeley Farm Shop**. Tel: [01548 581605](tel:01548581605) stock a range of locally sourced meat.
- **Daynes Farm, Harbertonford**. Organic farm where cattle, sheep and goats graze outside for the majority of the time and are fed only home-grown produce. Farm shop selling own produce. Email [info@daynesfarm.com](mailto:info@daynesfarm.com). Tel: 07815 902604.

## Mushrooms

- Grown on site at **Forest Fungi** gourmet mushroom growers, café and shop in Dawlish. Tel: 01626 864111.
- **The Deli at Dartmouth** on Duke Street has a Friday delivery of their eye-catching fungi. Tel: 01803 833200.



## Pies

- **Ben Handley, The Devon Pie Guy.** 2025 award winner at The British Pie Awards. Locally sourced ingredients. Home deliveries. Based **between Stoke Fleming and Strete**. Tel: 07973 331362.

## Vegetables

- **Red Hill Market Garden, Blackawton.** Producers of fresh, sustainably grown vegetables and herbs year-round. Email: [redhillmarketgarden@gmail.com](mailto:redhillmarketgarden@gmail.com). Tel: 07747 412274.

## **News from Stoke Fleming School**

We had a visit from Alex Mack from Devon Waste. Alex delivered a number of engaging workshops across the school, teaching the children about recycling, composting, and growing plants. It was a fantastic opportunity for the children to learn more about sustainability and how they can help care for the environment.



### **Gardening Club Success**

Over the summer term, Gardening Club was very busy planting, watering and weeding, resulting in some tasty lettuce and tomatoes. All members were super surprised, when they returned from the summer holiday, to find that the garden was full of vegetables including squash, corn and pumpkins, which the children were able to take home.



## Bramble Bounty



‘Organic’ blackberries  
(variety: ‘ready salted’)

*“But this is where I always pick my blackberries!”* My grandmother’s riposte, according to family lore, to the soldiers who barred her way to the bramble thickets atop Bournemouth cliffs during the war. I certainly remember that whole family blackberrying expeditions were later a regular part of childhood holidays with Granny; and then the warmly rich aroma as the luscious black berries in the large, red-stained, wooden punnets were turned into delicious crumble, pies and bramble jelly. For me picking blackberries has always been a significant activity as each late summer advances into early autumn.

This year there were lots of ripe blackberries even at the beginning of August: my London based grandsons were, I’m afraid, more interested in “geocaching”, but I enjoyed visiting my favourite bramble bushes on the Little Dartmouth cliffs. I’m surprised not to meet more folk gathering this local, free and tasty food. These days I don’t attempt any culinary finesse, but I would so miss my autumn puds of stewed blackberry and apple, the sharpness mollified with custard; and I thank creator God for another of his good gifts.

**Peter Barker**

## The Joys of Autumn at Fast Rabbit Farm Gardens

Sadly autumn seems often to be overlooked but it offers so much pleasure. Misty mornings pierced by shafts of sunlight as vivid Autumn colours emerge and distance is blurred. Most notable are acers in yellow to scarlet, Swamp Cypress of foxy red and Dawn Redwood trees in glorious golden yellow. Camellia sasanqua, of several varieties, shine out with profuse flowers defying the weather.



Apples are outstanding, grown organically and available in the Nursery. The trees are grown to be accessible with the central leader removed. New upward growth will now be shortened to create fruiting spurs.

The Gardens with ponds and lake are described by visitors as “A beautiful tranquil oasis, very special”. The Nursey, with a wide range of plants at modest prices, is much appreciated and used. Trip Advisor rate the Gardens five stars and in the top ten percent of attractions worldwide.

Visit us on Facebook, Trip Advisor, Google and several other websites including our own, <https://www.fastrabbitfarm.co.uk/>.

**Alan Mort**



## **Dartmouth Banking Hub (opens Monday to Friday, 09.00 – 17.00)**

The banking hub provides basic banking services including counter services run for the major banks by the Post Office. You can pop in on any day to access these services.

You can also talk to a community banker from your bank on the day your bank is in the Hub.

Monday	HSBC
Tuesday	NatWest
Wednesday	Lloyds
Thursday	Barclays
Friday	Santander

There is a private space where you can talk face-to-face about more complicated banking enquiries like payments and transfers, managing your account, and how to use online banking. Community bankers usually take their lunch breaks between 12.00 and 13.00.

### LEONARDS COVE HOLIDAY VILLAGE

## **Laundry Service**

### **Fed Up with Endless Sheets & Duvets?**

We provide professional washing, drying & ironing services, plus linen hire. We handle bed linen, towels & bedding essentials- from pillowcases to super king duvets!

Perfect for guest houses, Airbnb hosts, & busy households! Drop off your laundry & schedule a pick-up, or enjoy our collection & delivery service (small fee applies).

For enquiries and our full price list, call, email or just pop into reception!

☎ 01803 770206

@ info@leonardscove.co.uk

New Road, Stoke Fleming, TQ6 0NR



**Your local garden centre,  
café and farm shop.**

Open 7 days a week  
9am-5.30pm Mon to Sat,  
10am-4pm Sun.

**Gardentime, Hemborough Post,  
Blackawton, Totnes, Near Dartmouth,  
TQ9 7DE.**

**01803 712345    [www.gardentime.biz](http://www.gardentime.biz)**

## Stoke Fleming Information

### Stoke Fleming Library – Tel: 770076

At the Village Hall: Monday 15.00 to 17.00, Tuesday 10.30 to 12.30, Thursday 15:00 to 17.00.

### Stoke Fleming Village Shop and Post Office

	<b>Shop – 771119</b>	<b>Post Office – 770229</b>
Sunday	09.00 – 12.00	Closed all day
Monday	08.00 – 17.00	08.00 – 17.00
Tuesday	08.00 – 17.00	08.00 – 17.00
Wednesday	08.00 – 17.00	08.00 – 13.00
Thursday	08.00 – 17.00	08.00 – 17.00
Friday	08.00 – 17.00	08.00 – 17.00
Saturday	08.30 – 13.00	09.00 – 13.00

### Loam Rangers Community Composting (School Road)

Every Sunday 10.00 to 11.30.

### Bus – Service 93 (at Endsleigh Hotel)

Stoke Fleming to Dartmouth			Dartmouth to Stoke Fleming	
Mon – Fri	Sat	Sun	Mon – Sat	Sun
08.32	08.30		06.15 ( <i>Not Sat</i> )	
09.35	09.35		07.30	
11.00	11.00	11.38	09.30	09.55
12.00	12.00		10.30	
13.00	13.00		11.30	
14.00	14.00		12.30	12.25
15.00	15.00	14.08	13.30	
16.28	16.25	16:38	14.30	14.55
17.15	17.15		15.30	
18.15	18.15		17.15	17.25
19.15	19.15	19.13	18.45	

**Service 93** runs from Dartmouth to Kingsbridge

**Service 3** Some of the buses continue from Kingsbridge to Plymouth as service 3 on weekdays and Saturdays. Please check before travelling.

## November 2025

Sat	1	
Sun	2	
Mon	3	08.30 – Community Kitchen lunch tickets on sale – Village Shop
Tue	4	
Wed	5	17.30 – Breast Cancer Support Group – Health Centre 19.00 – Parish Council Meeting – Village Hall <b>Bonfire Night</b>
Thur	6	10.00-12.00 – Friends of Rowcroft Coffee Morning – Stoke Lodge 14.15 – Flower Club – Village Hall
Fri	7	14.00 – Craft Club – Village Hall 17.30 – Film: Dartmouth after 1945 – Flavel
Sat	8	10.00-13.00 – Tabletop Sale – Village Hall
Sun	9	10.50 – Remembrance service – St Peter's Church
Mon	10	14.30 – TASDAK meeting – Flavel
Tue	11	10.55 – Armistice Day service – War Memorial 19.30 – Hort & Sport AGM – Village Hall
Wed	12	14.30 – Wednesday Ladies – Village Hall
Thur	13	10.00 – u3a – Flavel
Fri	14	12.10 – Community Kitchen lunch – Village Hall
Sat	15	
Sun	16	<b>COPY DATE FOR DECEMBER/JANUARY MAGAZINE</b>
Mon	17	
Tue	18	
Wed	19	
Thur	20	
Fri	21	
Sat	22	
Sun	23	
Mon	24	
Tue	25	
Wed	26	10.30 – Probus – Stoke Lodge Hotel
Thur	27	
Fri	28	
Sat	29	
Sun	30	

## **Parish Council Minutes Summary – October 2025**

A monthly meeting of the Parish Council was held on Wednesday 1st October 2025 in the Ron Harris Room, Stoke Fleming Village Hall at 7.00 pm. Please note: a full version of these minutes is at the library and on the website.

The following Parish Councillors were present at the meeting of the Parish Council: Cllr David Harris (Chair), Cllr John Belli (Vice-Chair), Cllr Tim Moseley, Cllr Tilly Crowther, Cllr Jay Floyd, Cllr Bella Johnston, Cllr Belinda Duffy Also invited: County Cllr Julian Brazil, District Cllr Simon Rake, Clerk S A Whelon.

APOLOGIES FOR ABSENCE: Cllr Jack Handley, Cllr Phil Elliott.

MINUTES OF THE PREVIOUS MEETING OF THE PARISH COUNCIL ON WEDNESDAY 3rd September 2025, AND PLANNING SITE MEETING NOTES were signed by the Chairman of the meeting as true and correct records. Cllr Harris declared an interest in item 82a) and 88a) he left the meeting for 82a).

Two representatives from Baker Estates were present. Final commercial plot at Cotton Farm, re-application of 0721/25/VAR due to description clarification. Cllr Floyd will attend next Dartmouth TC meeting and report back to council.

### **COUNTY COUNCILLOR'S REPORT**

Passed strategic plan, populated from now on. Cllr Brazil will meet with all schools, currently fragmented.

Road maintenance – pot holes schemes not in the Stoke Fleming area.

Slapton Line meeting will be early October.

Back roads will be updated to include passing places.

Devolution – one county solution being explored, mayoral solution is popular.

Funding from central government is biased against rural areas.

Library Unlimited contract is up for renewal, costs are higher in Devon, looking to vary statutory opening times to encourage volunteers. Public consultation is planned. There are no plans to shut any libraries. Contact Cllr Brazil in the case of any books removed by library service.

### **DISTRICT COUNCILLOR'S REPORT**

Budget cut – due to government grant cuts. Predicted shortfall of £2,750,000. Confident to balance budget without affecting front line services.

Devolution: one Devon and 154 proposals being pursued.

One anonymous complaint re development re Blatchmore. Cllr Rake will reply if complainant comes forward, this will remain confidential.

**NEIGHBOURHOOD PLAN:** Public excluded. Cllr Harris withdrew, Cllr Belli chaired item. Proposed new car park:

- i. Report from sub-committee. A meeting took place at the weekend.
- ii Permission to incur costs to draw up plans for the purpose of progressing negotiations. Architect engagement approved to explore options and update plans. Funds will be allocated from the council's car park earmarked reserves.

## **COMMUNITY**

- a) BT phone telephony removal – Working Group report. Possible projects discussed. Several refurbishments required. Further volunteers will be invited. Change of use will be investigated by Cllr Rake. Clerk to re-send BT information to council. Budget to be confirmed following information of expenditure.
- b) Location of waste boxes on Cotton Farm to be confirmed. Either end of pedestrian cut-through, opposite parish noticeboard, second along path through to substation, at other far end of path, opposite play area. Installation date to be confirmed. Clerk requested a map with locations clearly marked.
- c) Christmas Tree festival council representatives and donation. Cllrs Crowther, Johnston, Duffy volunteered. Donation of £25.
- d) The South Hams Energy Assembly will be on Sat 18th October. Noted and posted on social media.
- e) Remembrance Sunday wreath - £25.00. Ordered by Cllr Harris.
- f) The *Voice* survey paper circulated to council. Noted.
- g) Composting – now contracted out. Cllr Rake to report.

## **ROADS & TRANSPORT**

- a) Dartmouth sign driving out of Stoke Fleming dropped down quite low (pedestrian path). Previously reported. Clerk to contact Dartmouth Town Council.
- b) Devon Highways policy on mirrors is “not permitted”. Cllr Harris to approach owner.
- c) Bin lorry still causing problems on Thursday school drop off. Cllr Rake to report.
- d) Traffic signage on Venn Lane to be pursued. Sign ‘ignore sat nav’, ‘width restriction’ at Venn Cross suggested. Resident has offered to contribute towards costs.

## **MAINTENANCE**

- a) Hemborough bus shelter repairs quotation for DCC – no quotes received.
- b) Toilets – School Road
  - i. Works update – timer and sensors for lights and hand dryer installation awaited.
  - ii. Smart meter installed. Protective box requested.
- c) Contracts – renewals and appointments:
  - i. Grass cutting, hedge cutting, assets maintenance renewals. Adverts to be posted on social media, website and noticeboards. Grass cutting contractor will not be renewing.
  - ii. Lengthsman (self employed) – new contract to be created
- d) Deer Park bus shelter bin & ivy to be repaired.
- e) Replacement bench for the playpark. Three composite benches required for playpark
- f) Birdwalk and Pavilion electricity renewals – 3 year fixed. Approved.

## **PLANNING: APPLICATIONS**

- a) Application Number 2544/25/ARC. Location Address: Glebe Park Farm, Venn Lane, Stoke Fleming, TQ6 0QF. Proposal: Application for approval of details reserved by conditions 4, (CMP), 9 (Foul Drainage), 10 (Surface Water Drainage) and 11



(Ecological Report) of planning consent 3750/22/FUL. Application Type: Approval of Details Reserved by Conditions.

b) Reference: 3358/23/FUL Proposal: READVERTISEMENT (additional information (statutory declaration) & amended plans) Construction of buildings comprising staff welfare building, workshop, classroom/office, stables/tractor store, building to enclose existing sand school, polytunnel, covered compost store, main animal rehabilitation building including shop/reception and 14no. animal rehabilitation buildings & enclosures, together with construction of new access onto highway, 24no. car parking spaces, internal roads & paths, foul & surface water drainage including attenuation pond, landscaping & associated development to serve use of site as animal rescue centre together with ancillary use of site for the purposes of providing education & therapy activities. Demolition of polytunnel & stables.

Site Address: Ash Tree Farm, Ash, TQ6 0LR. Council to support.

c) Reference: 0721/25/VAR Proposal: READVERTISEMENT (amended description) Application for variation of condition 21 of planning consent 0479/21/VAR. (Application for variation of conditions 18, 19 and 20 of planning consent 2609/19/VAR and 15\_51/1710/14/O) in order to increase the area of local centre land or employment land to be used for Class E(a) (retail) use from 0.4ha to 0.8ha. Site Address: Land At SX 853 510 adjacent to Townstal Road, Dartmouth.

To be discussed after meeting at Dartmouth TC. Cllr Floyd to email clerk.

d) Application Number 2675/25/NMM. Location Address: Land Off Townstal Road Sx 858 508 Dartmouth. Proposal: Non-material minor amendment to planning consent 2622/23/VAR for elevational and internal changes working through the full technical drawings. Application Type: Non Material Minor Amendment.

## **DECISIONS**

a) Application Number: 1910/25/ADV. Location Address: Bayards Court Care Home Cotton Road Dartmouth TQ6 0FF.

Proposal: Advertisement consent for site entrance monolith sign, sign boards (4 No.) and Wall Sign. Status: Approved. Application Type: Advertisement Consent.

b) Application Number: 2220/25/VAR. Location Address: Barn At Sx 844 512 (adjacent Woodbury Farm) Norton. Proposal: Application for variation of condition 2 (approved plans) of planning consent 0122/22/FUL. Status: Approved. Application Type: Variation or Removal of Condition.

## **WITHDRAWN**

a) Application Number: 2266/25/FUL. Location Address: Land Off Townstal Road Sx 858 508 Townstal Road Dartmouth. Proposal: Change of use of Mewstone Place from extra care apartments (Class C2) to retirement living apartments (Class C3) with associated communal facilities. Status: Withdrawn. Application Type: Full Planning Application.

**Date of next meeting: 5th November 2025**

## **STOKE FLEMING PARISH COUNCIL**

**Clerk: Sharon A Whelon, Email: [clerk@stokefleming.org](mailto:clerk@stokefleming.org)**

### **TENDERS ARE INVITED FOR THE FOLLOWING COUNCIL CONTRACTS FROM SELF-EMPLOYED CONTRACTORS (INSURANCE REQUIRED)**

**Tenders must be submitted by email by 12 November 2025**

#### **Playing Field grass cutting.**

Cutting the playing field grass twice each month April – September to a maximum of 12 cuts and once a month October to March as required. Additional cuts which may be required. The area to be cut is the whole of the playing field enclosed by the children's play area fence and fence/walls in the north, the playing field side of the hedge in the west and south and the Village Hall in the east.

#### **Hedge cutting**

- a) The hedge on the north side of Ravensbourne Lane, bordering the playing field.
- b) The hedge on the east of Venn Lane, bordering the playing field.
- c) The complete internal perimeter hedge of the playing field (excluding beech hedges of the Village Hall).
- d) Both sides of Redlap Lane from Windward to the National Trust car park.

#### **Village grass cutting**

Grass cutting and weed spraying around the village.

#### **Bench, seat, table, notice boards and toilet block maintenance (painting / Sadolin / Danish Oil)**

- a) The 25 seats and 2 benches within the village, with 50% being maintained annually.
- b) The three village notice boards (one opposite Stoke Fleming Post Office and Shop, one at Bugford cross and one at Cotton Farm estate) to be maintained biennially.
- c) The windows and internal and external doors of the Public Toilet sections of the Toilet Block.
- d) Wooden gates.

Further details for all contracts from the parish clerk.

**Email: [clerk@stokefleming.org](mailto:clerk@stokefleming.org)**

**Dartmouth Friends of Rowcroft  
Coffee Morning  
Stoke Lodge Hotel, Stoke Fleming**

**Thursday 6 November  
10am - 12pm**



**Delicious  
Cakes, Raffle  
and Craft  
Stall!**

*Raising funds for*

**rowcroft  
hospice**



Registered Charity No: 282723

## **The Arts Society Dartmouth and Kingswear (TASDAK)**

Our lectures take place in The Flavel Arts Centre and cover a wide range of historical and arts-related topics.

The next TASDAK meeting will take place on Monday 10th November at 2.30pm when Nirvana Romell will give a presentation entitled “**African Art – Is it Craft or Curio?**” This will be an introduction to traditional sub-Saharan African art focusing on general misconceptions, facts, and the influences of Africa on Europe. This lecture explains not only the general premise of African art appreciation but, with a lighter touch, shows how art can be used to replace a postal service, help with marriage problems or deal with unruly teenagers. Not to be missed!

**Juliet Lambert**

## **Breast Cancer Support Group – Dartmouth Caring**

In October, we welcomed two more new members to our friendly group, so we could share even more experiences and support with each other. Also joining us was the lovely Andie Day, our local Cancer Liaison and Palliative Care Nurse, who came to answer many of our questions.



October was also Breast Cancer Awareness Month and a reminder to check yourselves regularly and go along for any screenings that you may be offered.

I bang on about this all the time with no apology! I was diagnosed with Grade 2 invasive bilateral breast cancer in 2023 after my very first mammogram. I had no symptoms or lumps and was completely unaware anything was wrong. The screening literally saved my life, along with the amazing NHS teams involved in my care. Whatever screening is offered to us, we must take the opportunity to attend..... no excuses.

In our November meeting, we welcome Clare from the “Breast Cancer Now” team and our aim is to talk about “getting comfortable” both during and after treatment. Something we all still try and achieve daily!!

Whether you have been in remission for years or have a recent diagnosis or are a partner or relative of someone who is going through breast cancer, you would be made very welcome. Our next meet-up is Wednesday 5th November at 5.30pm to 7pm at Dartmouth Caring, Health & Wellbeing Centre, Dartmouth. Anyone from the South Hams/Torbay area is very welcome.

**Dawn Whiteley**

## Stoke Fleming 100 Club

The winner of the 100 Club October draw, held on 16th October at the Editorial Meeting of *Stoke Fleming Voice*; with the winning number 59 was Muriel Wakeham, who won £22.

As many of you will know, Joan Mason used to run the 100 Club. Simon Dowden kindly took this over around the time we took on the *Voice*, and I'm sure all members appreciate him taking on the administration at short-notice and running it for the last year.

Moving forward with renewed energy, the Village Hall Trustees have agreed that from next year, the 100 Club will be run by, and for the benefit of *Stoke Fleming Voice*, helping us to continue this publication, with any surplus being channelled into village causes. We would like to thank the Village Hall Trustees for their support.

We hope that more parishioners will join the 100 Club and that existing members will continue to be part of this exciting monthly, quarterly and annual draw which will put a smile on your face, supporting our community and providing a chance to win cash prizes.

The new membership year starts on 1st January and existing members will be contacted individually by email. Potential new joiners: look out for more details in the December issue.

**Sandra Ingham** (co-editor of the *Voice*  
and new promoter of the 100 Club / [sfvh100club@gmail.com](mailto:sfvh100club@gmail.com))

## Wednesday Ladies

We meet this month on 12th November at 2.30pm in the Village Hall, Ron Harris Room. **Preparing for Christmas.** If you would like to join Wednesday Ladies, or for more information, phone Jill on 01803 771137.

## Dartmouth & District Flower Club

All meetings are held in Stoke Fleming Village Hall. Subscription for the year is £35, with a small charge of about £3 at each meeting. There is always tea and cake served after the demonstration. The next meeting is:

Thursday 6th November at 2:15pm – **Whimsical Winter Wonderland** by the Dartmouth florist Alex, whose shop Otok is in the Market Square.

Contact: **Geraldine** [geraldine22@sky.com](mailto:geraldine22@sky.com)



**Let the new 100 Club put a smile on your face!**

**Win cash prizes in monthly cash prize draws!**

As a member of the 100 Club you will enjoy the excitement not only of monthly cash prize draws, but bigger quarterly draws and an extra special Christmas Jackpot Draw.

A fabulous way to spend just £1.25 a month!

**Membership only £15 a year...**

You can purchase as many memberships as you like to increase your chances of winning.

Half of every membership fee goes directly into the cash prize pot, while the other half supports Stoke Fleming Voice.

**Look out for joining details next month.**

**Existing members will be contacted individually. The email will remain unchanged: [sfvh100club@gmail.com](mailto:sfvh100club@gmail.com).**

**Promoter: Sandra Ingham, Stoke Fleming Voice**

**Beneficiary: Stoke Fleming Voice**

**Prize Fund: 50% of total proceeds will be returned as prize money**

**Age restriction: Members must be 16 years or older**

**Registration: This lottery will be registered with South Hams District Council under the Gambling Act 2005 (transfer of registration in progress)**

## Stoke Fleming Christmas Tree Festival 2025

Calling ALL Christmas Fans! Just a quick progress report. The sponsorship forms have been sent out and quite a few have already been returned. There are organisations and teams of people all over the Village already covered in glitter and sticky tape. Our locally grown trees are almost ready for felling. I am really looking forward to welcoming you ALL to this year's Festival – you can also volunteer to help or simply come and enjoy the spectacle – please get in touch if you need more information. A quick reminder of the dates for your diary:



**Friday 12th December until Sunday 14th December 2025**

I look forward to seeing you there!

**Caroline Martin** (07976 836509)  
[martincm516@gmail.com](mailto:martincm516@gmail.com)

## Michael Sutton's cellar

We are a small, independent Wine Merchant in the heart of the beautiful Blackpool Valley. We have a hand-picked diverse range including English wines from vineyards in nearby Sharpham, Teign Valley and just along the coast in Dorset. There's always something new to discover! Stop by for a chat and some friendly, expert advice.

Want to taste before you buy? Join in with our fun, monthly Open House Tastings! We also host Private Tastings and specialise in Wedding Wine Consultations to make your big day perfect. Our aim is to keep our customers well-hydrated with lovely wines! [michaelsuttonscellar.co.uk](http://michaelsuttonscellar.co.uk). 07736 24570





**MICHAEL SUTTON'S CELLAR**  
Celebrating 40 years in business  
Wine Shop & Tastings  
07736 245701  
[www.michaelsuttonscellar.co.uk](http://www.michaelsuttonscellar.co.uk)  
Riversbridge, Blackpool Valley, Stoke Fleming. TQ6 0LG



## **Dart Valley u3a**

On Thursday 13th November we will meet at The Flavel Arts Centre and **Dr Aroop Mozumder** will give a talk on the **Medical Aspects of Flying in the RAF**.

Aviation produces a hostile environment for aircrew. Supporting them is the core purpose of Military aviation medicine. This talk will describe the effects of G-forces, lack of oxygen and spatial disorientation and how to combat these, as well as medical aspects of carrying injured casualties of war by air.

Dr Mozumder recently retired as a medical officer in the RAF, where he became Director General of the RAF Medical Services in the rank of Air Vice-Marshal.

The entrance costs only £2 for members and £3 for guests. Tea and coffee will be available from 10.00 to 10.30am, please bring a reusable cup.

**Tim Freeman**

## **Nature Notes**

On Saturday 4th October I saw a male goosander in an “eclipse” (moulting) at Combe Lake. The green head was changed to brown like the female duck, it will change to green next month. I saw a goosander at the same place a couple of years ago and they were breeding in the upper River Dart (they nest in holes in trees along the riverbank). Also, there are two little grebes together off the island. Mallard ducks were seen at the old Bowden Pond and Riversbridge Pools, but one pool was nearly dried up. Two roe deer were seen near Ash Lane but no horns (males). I saw a migrating flock of swallows over my garden on 10th October and could be the last. On 8th October I saw a willow warbler on my buddleia, and it had dark yellow on its underside to migrate.

**DW**

## **Craft Club**

The next meeting of the Craft Club is on Friday 7th November from 2pm until 4pm at the Village Hall. Everyone welcome.

Enquires to **Lorraine** on 07713 033431

## Dartmouth Walk & Talk

Designed to suit all abilities, come along and join our sociable group, and enjoy walking in some of the most scenic areas in the country! Walks are graded Level 1 (easy, less than an hour) to Level 3 (more challenging, over two hours).

Anyone is very welcome to join our walks, but you do so entirely at your own risk.

Please wear suitable clothing and comfortable supportive footwear. Light coloured clothing is recommended where walks involve using busy roads. Dogs are welcome, please clear up after them and ensure they are on a lead at all times. Please bring a bottle of water on warm days and medication if required.

For more information on the walks please call **John** on 07570 848446. All walks are subject to change or cancellation at this time of the year.

Date	Time	Walk Level	Location of walk (£=bring money for ferry)	Meeting point
6 Nov	10.22 or 11.03	<b>3</b>	Dartington walk to Cider Press and on to Week and Huxhams Cross	10.22 no. 92 bus from Dartmouth Pontoon or 11.03 at Totnes Railway Station bus stop, Plymouth side
13 Nov	10.30 or 11.00	<b>2</b>	Slapton Ley and village circular	10.30 no. 93 bus from Dartmouth pontoon or 11.00 Slapton Turn/War Memorial car park
20 Nov	10.00 or 10.15	<b>3</b>	Broadsands Beach to Brixham via golf course and The Grove (£)	10.00 no. 120 bus from Kingswear Banjo or 10.15 Broadsands/Churston Library
27 Nov	09.30	<b>3</b>	Malborough to Salcombe	09.30 no. 93 bus from Dartmouth pontoon to Kingsbridge then no. 164 bus to Malborough

## Create our next Special Issue – on volunteering!

Would you like to join *Stoke Fleming Voice* as our Special Issues editor?

Contact us on [stokeflemingvoice@gmail.com](mailto:stokeflemingvoice@gmail.com) if so.

Other / alternative potential roles include -

(1) Trustees - we need just a couple more people – you could build your own role around any of the following responsibilities within our fun, flexible, self managed team:

- Features editor
- Website and Social Media editor / Community Engagement lead
- Grants / Fund Raising lead
- Events / Non-Magazine Activities lead
- Project developer, to take on new challenges as they arise!

Trustees will need to attend monthly meetings and participate in our active WhatsApp group to contribute more broadly to magazine production and our other activities.

(2) Sole contributors (can be outside the core team):

- Back-up Desk Top Publishing editor
- Back-up Distribution co-ordinator and distributors
- Proofreaders.

## Citizens Advice South Hams

Free, confidential and impartial advice

We give **up-to-date** advice on: benefits, work, domestic energy use, debt and money, immigration, consumer rights, housing, family issues, law and courts, problems with healthcare and more.



South Hams

Come and see us: The Flavel Arts Centre, Flavel Place  
Dartmouth, TQ6 9ND.

Every Tuesday 9.30am to 12.30pm.

Call us on: **0808 278 7948** [southhamscab.org.uk](http://southhamscab.org.uk)



## Stoke Fleming Village Hall Update.

It has been another busy month at the Hall as we continue our extensive programme of repairs, redecoration and improvements. This has included the replacement of a rather old oil tank, a full upgrade of the main halls sound system, thanks to Darryl Pitt, and a comprehensive clean up around the building by a team of willing volunteers.

The next projects on the horizon include cleaning the outside walls of the building, reinstatement of the oil tank cage, thanks to Jon Skelly, and the installation of solar panels on the roof. We are delighted to have received a grant from the Lottery Fund towards this, details of which will be outlined in the next issue of this magazine.

Talking of fundraising we will be holding another Tabletop Sale, on Saturday 8th November (10am – 1pm). The previous one was a tremendous success with a multitude of bargains on offer as well as some wonderful cakes and refreshments. We hope that this sale will be as well attended as the one held in June.

We are also currently organising a wonderful sing-along Christmas Carol Concert on 13th December so make a note in your diary and look out for more details coming soon.

As our workload increases, we would like to welcome aboard Liz Griffiths as the new Secretary/Admin Officer to the Board of Trustees. Liz has been in Stoke Fleming for a year and a half and is keen to contribute further to village life. Liz is already part of the Loam Rangers team, and we look forward to working with her in the administration of the Village Hall.

Finally, we would like to take the opportunity to send our condolences to Trevor Mason following the loss of the village icon his wife, Joan.

Joan was simply involved in practically every association or group over her lifetime in Stoke Fleming. She was Vice Chair for our Village Hall for over ten years and worked closely with ex Chair Barry Morris who is writing a detailed account of Joan and her service to this beloved village. This loss follows that of John Goddard, Shirley Ruddleston and Mike Jordan who all contributed so much to the Parish, its community activities as well as the Hall itself. They will all be sadly missed.

**TABLE TOP SALE**  
Get rid of clutter and earn cash  
**Stoke Fleming Village Hall**  
**Saturday 8<sup>th</sup> November**  
10.00am to 1.00pm  
**Free Entry**



**Raffle**  
Table set-up 9.00 am  
**ART & CRAFTS WELCOME**  
To book a table contact  
Jill 01803 770045  
£10.00 payable in advance  
**Refreshments**

One of Joan's many roles was managing the 100 Club for the Hall as well as the magazine. The Trustees, with this in mind, have decided to hand over the running of the club to the *Voice* and we hope the proceeds will help to maintain this important publication, as well as benefiting others. See page 36 for more information.

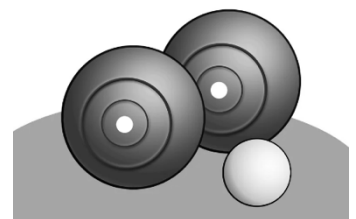
The success of our Village Hall is directly linked to the hard work of our Trustees and to those Parishioners who devote time towards it, not to mention the cooperation of those associations that use it. We thank you all for your continued support and, in particular, for the generous donations that have been recently received.

**John Belli**

## **Short Mat Bowls**

Our Short Mat Bowls Club meets on Tuesdays from 2-5pm, (usually finishing a little early).

The last two weeks we have played on all three mats, with a very lively mix of seasoned and new members trying out. The first three sessions are free then £5 a week thereafter plus a small annual subscription.



We held our AGM recently, with some new officers elected, and have had a welcome flurry of new interest. We hope to continue in this vein, with more committee members always welcome.

We shall take part in the December Christmas Tree Festival, sponsoring a tree in memory of John Goddard. The planning for the post-Christmas Social at the Sportsmans Arms is under way.

All welcome, most abilities catered for. It's a friendly activity for a winter's afternoon with the benefit of gentle exercise, plus tea and biscuits! Just turn up on Tuesday afternoons or ring **Erica**, Secretary, on 07807 948020.

## **Start Bay Performers**

The Start Bay Performers meet in the Ron Harris Room on Monday nights at 7.00pm. At the moment we are having fun reading plays, deciding which one to perform. You may not want to be on stage, but we also need people to be in the wings prompting, sorting the props or pressing the button for the music. We'd love to see you.



**Mary Rimell**



**Dartmouth 01803 839530**  
**www.theflavel.org.uk**



<b>Annie Jr.</b> (LIVE on stage) <b>Dartmouth Theatre Company</b> (Young Performers)	Sat1 Nov and Sun 2 Nov
<b>David Alexander Open Art Exhibition</b>	From Mon 3 Nov
<b>Downton Abbey: The Grand Finale</b>	From Tue 4 Nov
<b>RBO: LA FILLE MAL GARDÉE</b>	Wed 5 Nov
<b>The Inn Theatre Company:</b> Shakespeare's Dreams. Charms & Phantoms (LIVE on stage)	Thu 6 Nov
<b>Friday @ The Flavel: Dartmouth 1945</b> (film)	Fri 7 Nov
<b>Beatles Complete</b> (LIVE on stage)	Sat 8 Nov
<b>Exhibition on Screen: Caravaggio. 90'</b>	Wed 12 Nov
<b>FLOOK: Celebrating 30 years</b> Folk at The Flavel (LIVE on stage)	Thu 13 Nov
<b>Red Wagon, with support from The Showers</b> (LIVE on stage)	Fri 14 Nov
<b>Comedy Club:</b> Paul Sinha (LIVE on stage)	Sat 15 Nov
<b>Dartmouth Supports Ukraine:</b> Charity Fundraiser	Tue 18 Nov
<b>John Cleese Packs It In (12A)</b>	Wed 19 Nov
<b>Explorer Series: Belinda Kirk</b> (LIVE on stage)	Thu 20 Nov
<b>Alex McAleer: Mind Reader</b> (LIVE on stage)	Fri 21 Nov
<b>An Evening of Gilbert &amp; Sullivan</b> (LIVE on stage)	Sat 22 Nov
<b>RBO: Cinderella</b>	Tue 25 Nov
<b>National Theatre Live: The Fifth Step</b>	Thu 27 Nov
<b>Looking for me Friend: The Music of Victoria Wood</b> (LIVE on stage) (pre-show supper also available)	Fri 28 Nov

## Stoke Fleming Golf Society

Saturday 21st September saw the Stoke Fleming Golf Society host its second competition at The Dartmouth Golf Club. This time we took to the course proudly wearing our brand-new society polo shirts, kindly sponsored by Alan and Georgie of The Green Dragon. At least we looked the part, even if the weather had other ideas – cold winds made the course more challenging than usual.



Despite the conditions, our numbers grew from 8 to 12 players, a sign that the society is going from strength to strength. There was plenty of good golf on show, with a standout highlight being Alan Jones' remarkable chip-in from 90 yards on the 7th hole – no doubt a story he'll be sharing for years to come!

In the end, it was Tim Woodley (12) who came out on top with a very respectable 35 points.

Special mentions go to:

- **Winner:** Tim Woodley
- **Longest Drive:** Elliot
- **Nearest the Pin:** Ashley

As with the real Ryder Cup, it was **Team Europe** who claimed the win this time.

The Stoke Fleming Golf Society meets quarterly, rotating around local golf clubs before finishing up with well-earned refreshments back at The Green Dragon. Handicaps range from scratch to 28, and new members are always welcome. If you'd like to join, simply send a text to the following number to be added to our WhatsApp group – **Ashley** 07888 383808.



## STOKE FLEMING VILLAGE SHOP & POST OFFICE



Confectionery, Newspapers, Stationery, Groceries  
 Good Selection of Wines and Spirits  
 Food & Drinks to go - Beach Goods & Toys  
 Postal Services - Personal Banking & Withdrawals  
 Bill Payments - Travel Money - Open Daily



**Tel: Shop 771119 - Post Office 770229**



### STANBOROUGH FARM

QUALITY LOCAL PRODUCE

Now is the time to order your free-range, oven-ready bird for Christmas!

*\*Turkeys, Geese, Ducks & Chicken\**

**Contact us to order:**

Call/Text:

**01548 821306 / 07807787327**

E-mail:

**info@stanboroughfarm.com**

Stanborough Farm, Halwell, Totnes

Find and follow us on social media:



Stanborough Farm



stanboroughfarm

## Darmeck



MOT  
Testing Station

*Cars, Light Commercial  
 and Motorcycles  
 The Old Abattoir  
 Dartmouth*

(01803) 834234

Proprietor: John Darby

## shoreline

**design, plant,  
 maintain**

**07989 564082**

**julie\_elliott@hotmail.com**



*Relax, unwind. Reclaim your health, vitality and wellbeing. Release pain, stress anxiety and fatigue. I combine the power and depth of Kinesiology with the principles of Life Coaching and a range of energy balancing tools from Traditional Chinese Medicine, Zero Balancing and Indian Head Massage.*

Kay Scott

01803 770 276/ 07816 758 107

www.intouchdevon.co.uk

connect@intouchdevon.co.uk



Live Life in Balance





# CHRISTMAS SING-ALONG

led by Lucy Hingston

PRESENTED BY THE 8 PIECE ENSEMBLE

## BRASS MONKEYS

at

### STOKE FLEMING VILLAGE HALL

**SATURDAY**

**13th DECEMBER**

**7.30 pm**

**Doors open at 7.00pm**

**Tickets £10 - from Stoke Fleming Village  
Shop or Tel Jill on 01803 770045**

**All proceeds towards Stoke Fleming Village Hall**

**Refreshments and Licensed Bar**

# RGC mobility

KITCHENS & BATHROOMS FOR INDEPENDENT LIVING

**Wet Rooms • Walk-in Baths  
Wash & Dry Toilets  
Grab Rails • Raised Toilets  
Seated Showering  
Level Access • Adapted Taps**



Collingwood Road Dartmouth TQ6 9JY  
01803 834622 [rgcbuildingsupplies.co.uk](http://rgcbuildingsupplies.co.uk)



## TRATTORIA SPAGGIA

Italian flavours in the heart of Stoke Fleming! Fresh pasta dishes made with love. Join us for a taste of Italy!

New Rd, Stoke Fleming,  
01803 927232



## A.F. Brown & Sons Ltd

**Landscaping & General Building**

Family Business since 1976  
Gatcombe Mill - Littlehempston  
Totnes TQ9 6LW

Tel/Fax: 01803 864871  
Email: [enquiries@afbrown-sons.co.uk](mailto:enquiries@afbrown-sons.co.uk)  
Web: [www.afbrown-sons.co.uk](http://www.afbrown-sons.co.uk)



*Stoke Fleming*

*Tailor made  
treatments*

**18 years experience**

Contact: Samantha on 07572 430242  
[www.Hideawaybeauty.com](http://www.Hideawaybeauty.com)

## South Hams HANDYMAN

**BUILDING • RENOVATION • REPAIR**

Kitchens & Bathrooms • Carpentry & Joinery • Patios & Paving  
Landscaping • Plastering & General Building Maintenance

**07779-558897**

[SouthHamsHandyman@outlook.com](mailto:SouthHamsHandyman@outlook.com)  
[www.SouthHamsHandyman.com](http://www.SouthHamsHandyman.com)

# EZEBAG

**You Fill it Up  
We Pick it Up**

The Easier  
Way to  
Clear Away  
Your Rubbish



**From £135**

Including bag delivery & collection

**[ezebag.co.uk](http://ezebag.co.uk) 01803 834622**

**HOUSEHOLD • GARDEN • DIY • GENERAL BUILDING**

## Sport, Exercise, Activity at the Village Hall

### Tuesdays

- 09.30-10.30 Zest Stretch and Reset Yoga, designed to improve flexibility, strength and to help you destress. All levels welcome. Book [www.zest-yoga.co.uk](http://www.zest-yoga.co.uk) / Kirsty: 07534 441715.
- 10.45-11.45 Stretch & Stay Mobile, a gentle, chair-based class designed for people with injuries or limited mobility. Most of the exercises are seated, with some optional standing ones using the chair to improve balance. Book [www.zest-yoga.co.uk](http://www.zest-yoga.co.uk) / Kirsty: 07534 441715.
- 14.00-16.30 Short Mat Bowls. New players always welcome. Contact Erica: 07807 948020.
- 19.00-21.00 Table Tennis, new players (over 18) are always welcome. Contact Kim: 07594 223673.

### Wednesdays

- 09.15-10.15 Yoga with Ellie, no experience required. Contact Kirsty, Ellie or Lara: 07778 208080 / 07534 441715.\*
- 10.30 Club de Pétanque, Village Hall recreation ground, for all skill levels. New members are welcome. Contact John: 07811 102460.
- 17.00-18.00 Outdoor Yoga on the Playing Field. Contact Tegan on 07490 731087.

### Thursdays

- 13.00-14.00 Tiny Feet Yoga, a friendly, relaxed, weekly class to enjoy with your baby, helping your body heal and recover after birth and pregnancy.

### Fridays

- 09.15-10.15 Move with Grace Pilates, a mixed level mat work class. Contact Grace: 07757 907025 / [www.movewithgrace.co.uk](http://www.movewithgrace.co.uk).
- 10.00-13.00 Mahjong. 1st and 3rd Friday each month. New players always welcome. Elaine French. 01803 832304/[frenchfamily1@live.co.uk](mailto:frenchfamily1@live.co.uk).
- 17.00-18.00 Outdoor Yoga on the Playing Field. Contact Tegan on 07490 731087.

### Sundays

- 10.30 Club de Pétanque, Village Hall recreation ground, for all skill levels. New members are welcome. Contact John: 07811 102460.

*\*Please check for any last minute changes.*

## The Probus Club of Stoke Fleming and District

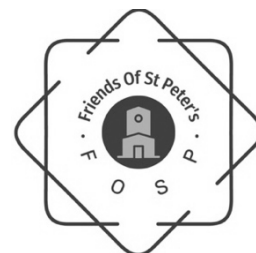
The Probus Club of Stoke Fleming and District is a lunch and social club for gentlemen who have retired from business or a profession but are keen to remain socially active. We meet together at the Stoke Lodge Hotel, normally twice a month. We always have interesting speakers at our meetings and the hotel bar opens for a social chat after the talk. Once a month we have a communal lunch together.

The Club would like to extend a special welcome to the new residents of **Mewstone Place** at Little Cotton Farm as they start their new lives in their sparkling new surroundings. On 26th November at 10.30am in the Stoke Lodge Hotel, the Club will hold a coffee morning where our speaker **Caroline Robertson-Brown** will show an illustrated talk all about **Sharks and Rays**, including the work of the Shark Trust. Mewstone Place residents and anyone else interested are cordially invited to come along for the talk, enjoy a cup of coffee with us and find out more about how Probus operates. Alternatively, please call the Club Secretary on 01803 770739 for more details.

**Peter Hales**

## Friends of St Peter's

The FoSP committee is pleased to report that Dart Surfacing Ltd have been given the job of repairing the path from the war memorial to the east end of the church and weed killer has already been applied to the overgrowing vegetation. Our thanks go to Ali Girardot and John Dietz for fixing this on behalf of the PCC. We are also grateful to Anne Bailey for sending out the latest excellent newsletter, and to Jenny Hailstone and the Living Churchyard team for arranging the strimming of the NE section of the churchyard. Once again, the volunteers raked the area and the cut grass was sent to Loam Rangers, transported by David and Stuart Harris. After raking, wild carrot and knapweed seed heads, which had been snipped off during late summer, were scattered around the area.



**Peter Barker**  
(Chair of FoSP)

## Prickles in a Pickle

The Autumn hoglets and juveniles have been pouring in from all over South Devon. Just today we have had three in under 90g. Hedgehogs have always produced young in Autumn as well as Spring and Summer. These little ones are, in the most part, born to die. They are much more challenging to save than the early ones.



Global climate change is much more obvious when you are someone working with nature, whether it be in farming, habitat, environment or rescue. Seasons have become almost indistinguishable with regard to temperature. For the hedgehog and any other hibernating animal, it poses even more of an issue than that of food source and breeding seasons.

Hibernating animals have to lay down two different types of fat. White fat to sustain the hibernation or torpor and brown fat, a little energy pack, to enable them to forage when they wake in the spring. Or this was the case until temperatures confused the issue of when or if to hibernate. Going in and out of sleep is detrimental to the animals' health. In the southwest many do not hibernate at all. As far as research shows feeding does not affect the hibernating behaviour as food source is not the only trigger. Therefore, feeding year-round is vital.

Loss of habitat and especially linked habitat is another huge factor in the hedgehogs' demise. If more of us linked our gardens and planted for nature it would benefit so much of our wildlife.

Numbers this year so far, 682. Please remember, "Out in the day is not ok!".

**Judy and Alan**

@Prickles in a Pickle / [www.pricklesinapickle.co.uk](http://www.pricklesinapickle.co.uk)



# Discover

**Mewstone Place, Dartmouth**

Our retirement properties are cleverly designed to make life easier – now and in years to come. With sought-after locations, friendly communities and helpful on-site staff, they're the perfect place to do more of the things you love for longer.

But don't just take our word for it, come and find out for yourself. Pop in to our on-site Sales Suite, open Tues - Sat, 10.30am - 5pm.

**Mewstone Place, Barton Way, Devon TQ6 0GN**

For more information, call **0800 153 3030** or visit [mccarthystone.co.uk/mewstone-place](http://mccarthystone.co.uk/mewstone-place)

**McCarthy Stone**  
Retirement living *your way*

Rentals  
now  
available



## **G.P. & S. Lock**

### **Building & Property maintenance**

Interior & Exterior Decorating  
Tiling & Property Refurbishments  
UPVC Supplied & Fitted, Guttering Cleaning  
Pressure Washing & Fencing  
Carpentry Work & Repairs  
Husband & Wife Team

Phone: 01803 712942 - Mobile: 07811 866862



Stunning Sea Views  
Comfortable Walk to Beach  
All Bedrooms En-Suite  
Free Wi-Fi  
Guest Lounge  
Dogs Welcome  
Ample Off-Road Parking

### **Channel View Guest House, New Road, Stoke Fleming**

Tel: 01803 770 389

Email: [relax@channelviewguesthouse.com](mailto:relax@channelviewguesthouse.com)

Web: [www.channelviewguesthouse.com](http://www.channelviewguesthouse.com)

## **MOBILE HAIRDRESSING**

in

Stoke Fleming Village  
Wednesday, Thursday, Friday  
Ladies Cut/Blowdry & Dry Cuts  
Men's Cuts

Phone Helen on 07398167873



Installations

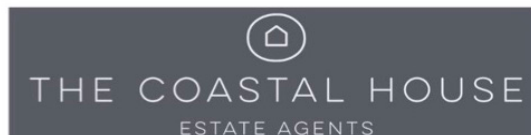
Testing

Repairs

Fault Finding

**07949335408**

[www.jrelectricalsw.co.uk](http://www.jrelectricalsw.co.uk)



### **SELLING UNIQUE HOMES**

**01803 835 788**

[www.thecoastalhouse.co.uk](http://www.thecoastalhouse.co.uk)

## **R.C.Pillar & Sons Ltd FUNERAL DIRECTORS**

Ensuring your loved one  
receives a funeral with care  
and dignity throughout.

We are independent Funeral Directors  
offering a high quality, compassionate  
and personalised service since 1870.

**We offer a 24 hour service  
and pre-paid Funeral Plans.**

Dartmouth 01803 832121  
[www.rcpillar-funerals.co.uk](http://www.rcpillar-funerals.co.uk)

## **WINKWORTH**

for PROPERTY in the VILLAGE,  
by the SEA and in the COUNTRY

*Stephen Levy*

for service and results - 07941 402910  
your resident Stoke Fleming Estate Agent

[slevy@winkworth.co.uk](mailto:slevy@winkworth.co.uk) 01803 832288





## ***Stoke Fleming Voice* in 2026**

We hope you have enjoyed this special issue of *Stoke Fleming Voice*. In 2026, we will publish additional special issues, continue with new features such as Village, or Parish Life, and introduce even more new interesting and useful content for you.

The magazine is currently delivered ten times a year to 825 homes in the parish. Since April 2025 this has included 220 homes in Little Cotton Farm; however, we will be unable to continue distribution there beyond April 2026 without additional funding.

Instead of this, we aim to have a means of downloading pdf copies of the magazine in place by early next year. We'll be contacting all contributors to the magazine shortly to discuss our plans for this with you.

We see online access to the *Voice* as the most feasible option available to reach second homeowners, in the short-term at least, and most guests staying in the parish as well (although we hope we can continue to make printed copies available in the Village Shop, Green Dragon, Stoke Lodge hotel and the Deer Park camping too).

Printing will continue in black and white, although we may be able to include occasional colour pages and / or covers too.

## **Advertise in the Magazine**

We are in the process of contacting existing advertisers about continuing to feature in *Stoke Fleming Voice* through 2026. However, given our increasing page count, there will be room to add new advertisers, whilst taking care to maintain the balance across the range of services and goods advertised.

We believe advertising in the *Voice* provides a great opportunity to show support for the parish, to increase visibility of the business and of course, to increase sales. We know that our readers value the information which the advertisements provide.

The application deadline for existing advertisers is 30th November at which point potential new additional advertisers will be selected. To discuss your requirements, please email [jennyhaley029@gmail.com](mailto:jennyhaley029@gmail.com) or call 07770 373981.

# ALADDIN'S CAVE



Lost	Found	Wanted	Good Home Needed
------	-------	--------	------------------

FOR SALE	Kindling and logs, all recycled from builders' waste and in large feed bags. Kindling £15, recycled wood logs £8, "Proper" logs £10. All proceeds to Prickles in a Pickle.		Alan: 07970 983608
WANTED	Prickles in a Pickle needs lots of steriliser, newspapers and other items. See page 50. 20 Well Park Place.		Judy: 07891 657104 Alan: 07970 983608 01803 771086

*Stoke Fleming Voice does not make a charge for advertising in "Aladdin's Cave" but if your advert is successful we would much appreciate a donation. See inside back cover for our bank details.*

## A postscript from Cllr Simon Rake....

Raising awareness of the climate, economic, and individual benefits of "eating local" is, in my view, an essential component in our efforts to tackle climate change and so I congratulate you on having the imagination to dedicate an issue of *Stoke Fleming Voice* to these matters. I think it is exactly this sort of locally focused action that the Climate Change and Biodiversity Locality Fund was created to support.

I am also pleased to see that you intend to build on this new approach both to cover other topics in more detail than one might perhaps expect to find in a Parish magazine and to raise funds for the continued publication of the *Voice*.

As I have told you in the past, I think that as well as being a key channel for information, Parish magazines make a key contribution to building community cohesion and involvement.

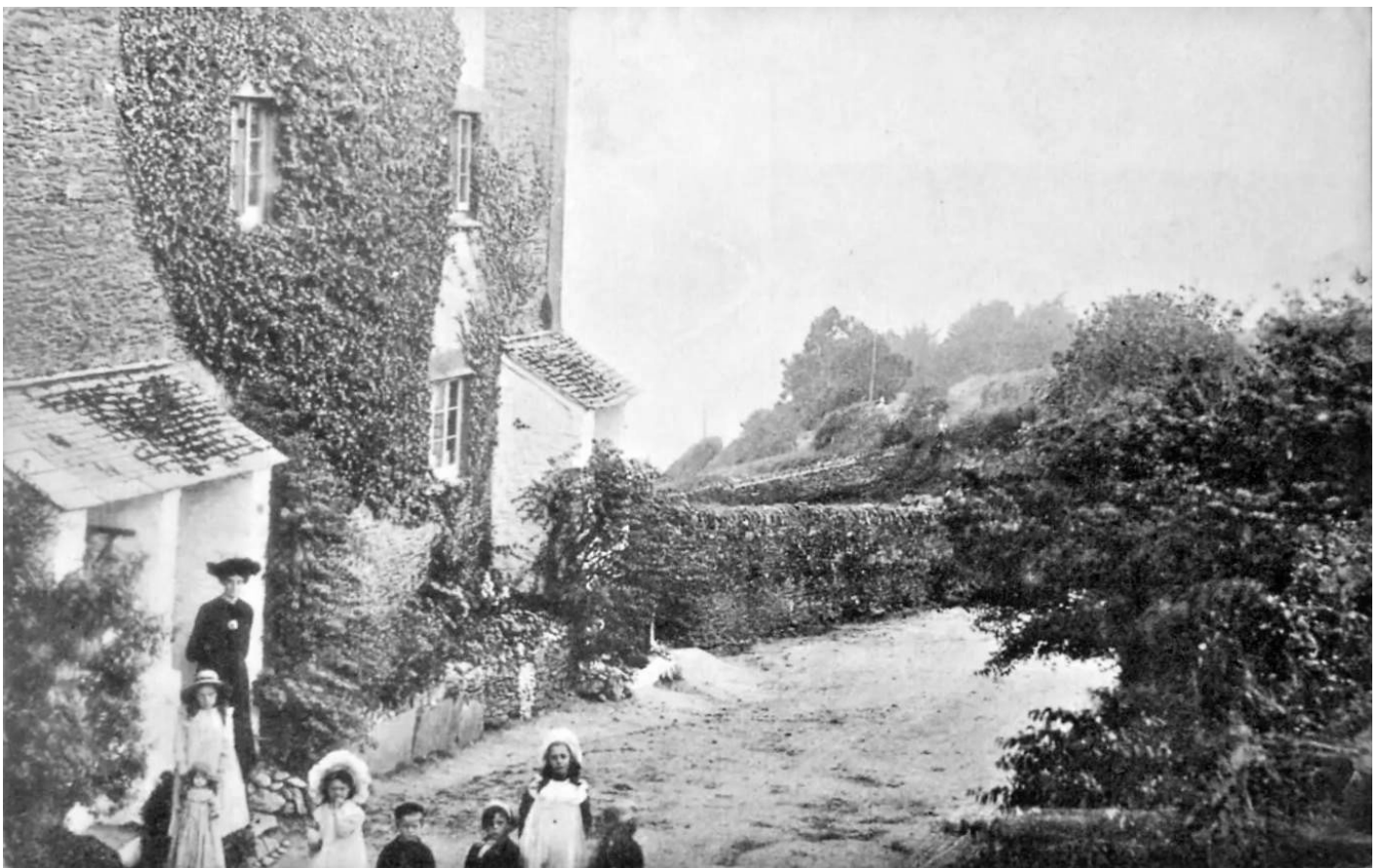
I appreciate that putting the *Voice* together and raising the funds to do so is a lot of work for a volunteer team – however talented and dedicated they might be – and want to take this opportunity for all that you and the team do to ensure its continued success.

## Where are we now?

For the October picture we were in Rattery, which obviously caused some confusion as I have had no guesses at all! Sorry.



So, let's see how you get on with this month's picture going back to 1915. Now the only question is where are we now?



**Barry Morris** (Tel: 01803 770754, email: [barry219morris@btinternet.com](mailto:barry219morris@btinternet.com))



01803 770787 - 07974 382158 philip@elliott-construction.co.uk  
elliott-construction.co.uk



## Gill's Autos

MOT welding specialist  
bodywork & spraying

## Mr I Gillard

Unit 3  
The Old Abattoir  
Jawbone Hill  
Dartmouth

01803 835998  
01803 770491

## Dart Roofing

Tiling, Slating, Flat Roofing  
Fascias, Guttering or Leadwork

No job too small

46 years experience

Ring Nigel on 770105 or 07969 561365

## ANDREW MOLD

Plastering and General Building

The First Choice for all your Plastering and Building needs

*Plastering - Alterations - Restorations*

*Extensions - Patios - Kitchen & Bathroom fitting*

*General Maintenance*

*Locally Established Reputation for a Friendly, Reliable Service  
& High Quality Work*

*Over 25 Years Experience*

Tel: Dartmouth: 01803 832 360 Mobile: 07970 193 995

## P R PLUMBING & HEATING

Central Heating installation

Underfloor Heating, Solar installation

Boiler changes, L/L Safety checks

Bathrooms

Natural Gas, LPG

Phone Paul on: 01803 770204 or 07932 328428



## Useful Contact Details

(Local Area Code: 01803)

County Councillor (Devon)	Julian Brazil	01548 511109
District Councillor (South Hams)	Simon Rake, <a href="mailto:cllr.simon.rake@southhams.gov.uk">cllr.simon.rake@southhams.gov.uk</a>	861129
MP for South Devon	Caroline Voaden, <a href="mailto:caroline.voaden.mp@parliament.uk">caroline.voaden.mp@parliament.uk</a>	658461
Medical services	Boots	832742
	Wellbeing Pharmacy, Dartmouth	832474
	Wellbeing Pharmacy, Health Centre	222117
	Dartmouth Medical Practice	832212
	Dart Vale Vets	832422
Stage Coach buses	Customer Services	01752 495200
Refuse and Recycling	<a href="https://www.southhams.gov.uk/waste-and-recycling">https://www.southhams.gov.uk/waste-and-recycling</a>	861234
Taxis (Dartmouth)	Kestrel Taxis	832526
	Micky's Taxis	07812 088935
	Prestige Taxis	714336

### Stoke Fleming Voice Editorial Team

Co-editors	Sandra Ingham, 07889 573087, Jenny Hailstone <a href="mailto:stokeflemingvoice@gmail.com">stokeflemingvoice@gmail.com</a>	07770 373981
Advertising	Jenny Hailstone, <a href="mailto:jennyhaley029@gmail.com">jennyhaley029@gmail.com</a>	07770 373981
Treasurer	Jon Ingham	07904 185134
Publishing	Anne Bailey	07885 948254
Distribution	Pam Sanders	07950 740301

*Stoke Fleming Voice is run entirely by parish volunteers, for the benefit of parish residents. Our editors work hard to ensure factual accuracy; however, readers may want to check provided information for themselves. Please notify us of any changes to contact details.*

*Donations towards the production of this magazine are always welcome. Our Bank details are: Stoke Fleming Voice, A/c: 19250960. Sort code: 30-54-66 or use the QR Code.*



# Stoke Fleming Village Directory 2025

(Area Code: 01803)

Bellringing	John Dietz	770515
Bowling Club	Liz Mallyon	712799
Church – Rector	Rev Matt Gorton, <a href="mailto:revgorton@hotmail.com">revgorton@hotmail.com</a>	906861
Church Visiting Group	Rosemary Minshall	770300
Churchwarden	John Dietz	770515
Craft Club	Lorraine Forman, <a href="mailto:Lorraineforman@gmail.com">Lorraineforman@gmail.com</a>	
Cricket Club	Stacey Gilbert	07931 384017
Dart Valley u3a	Suzie Dodsworth	770134
Friends of St Peter's	Peter Barker	770556
Hort & Sport Show	<a href="mailto:enquiries.hortandsport@gmail.com">enquiries.hortandsport@gmail.com</a>	
Little Lanterns	Lisa Callard	770244
Loam Rangers	Steve Shakespeare	07979 137311
Parish Council	Sharon Whelon, <a href="mailto:clerk@stokefleming.org">clerk@stokefleming.org</a>	
Pétanque	John Sparks	07811 102460
Primary School	Christopher Harrison, Head Teacher	770244
Primary School (Friends)	Annabel Harris	770244
Probus Club	Peter Hales	770739
Short Mat Bowls	Erica Travies	07807 948020
Start Bay Performers	Mary Rimell	07909 970510
Table Tennis	Kim Fricker	07594 223673
Village Hall Bookings	Emily Handley, <a href="mailto:enquiries@stokeflemingvillagehall.org.uk">enquiries@stokeflemingvillagehall.org.uk</a>	07450 075734
Village Hall Management Committee	John Belli, Chairman of Trustees	07538 156864
Wednesday Ladies	Jill Fell	771137
Youth Club	Rev Matt Gorton, <a href="mailto:stokeflemingyouthclub@gmail.com">stokeflemingyouthclub@gmail.com</a>	906861